

3 GRAMMAR FOCUS

Negative statements and yes/no questions with be

I'm **not** from New York.
 You're **not** late.
 She's **not** from Russia.
 He's **not** from Italy.
 It's **not** English.
 We're **not** from Japan.
 You're **not** early.
 They're **not** in Mexico.
 We're = We are

Are you from California?
 Am I early?
 Is she from Brazil?
 Is he from Chile?
 Is it Korean?
 Are you from China?
 Are we late?
 Are they in Canada?

I am.	I'm	not.
you are.	you're	not.
she is.	she's	not.
Yes, he is.	No, he's	not.
it is.	it's	not.
we are.	we're	not.
you are.	you're	not.
they are.	they're	not.

A Complete the conversations. Then practice with a partner.

- A: Hiroshi, are you and Maiko from Japan?
 B: Yes, we are.
 A: Oh? Are you from Tokyo?
 B: No, I'm not. I am from Kyoto.
- A: Are you Laura from the U.S.?
 B: No, she's not. She's from the U.K.
 A: Is she from London?
 B: Yes, she is. But her parents are from Italy. We're not from the U.K. originally.
 A: are you Laura's first language Italian?
 B: No, it's not. It's English.
- A: Are you Selina and Carlos from Mexico?
 B: No, they are not. We're from Brazil.
 A: Are you from Brazil, too?
 B: No, I'm not. I'm from Peru.
 A: So, is it your first language Spanish?
 B: Yes, it is.

Kyoto, Japan



Lima, Peru

B Match the questions with the answers. Then practice with a partner.

- | | |
|--|---|
| 1. Are you and your family from Canada? <u>d</u> | a. No, he's not. He's from Singapore. |
| 2. Is your first language English? <u>c</u> | b. Yes, she is. She's from California. |
| 3. Are you Japanese? <u>e</u> | c. No, it's not. It's Japanese. |
| 4. Is Mr. Ho from Hong Kong? <u>a</u> | d. No, we're not. We're from Australia. |
| 5. Is your mother from the U.S.? <u>b</u> | e. Yes, we are. We're from Kyoto. |

C PAIRWORK Write five questions like the ones in part B. Then ask and answer your questions with a partner.

1 Negative statements and yes/no questions with be

- ▶ Use *be* + *not* to form negative statements: Ana **isn't** a student. (NOT: Ana is no a-student.)
- ▶ *You* is a singular and a plural pronoun: Are **you** from Rio? Yes, I am./Yes, **we** are.

A Unscramble the words to write negative statements.

- in California / not / New York City / is
New York City is not in California.
- London / not / from / we're
London were not from
- not / you and Tim / in my class / are
In my class are not you and Tim
- is / my first language / Spanish / not
Spanish is not my first language
- from / my mother / not / is / Seoul
My mother is not from Seoul
- my keys / not / are / they
They are not my keys

B Complete the conversations.

- A: Are you and your family from Mexico?
B: No, she's not. she is from Guatemala.
- A: Is it your first language English?
B: Yes, it is. My parents were are from Australia.
- A: Are you from Kenji and his friend Japanese?
B: Yes, they are. But Are you in the U.S. now.
- A: Is your my mother and I late?
B: No, she's not. he is early!

4 PRONUNCIATION Syllable stress

A Listen and practice. Notice the syllable stress.

●● China Turkey <i>Chinese</i> <i>TURQUIA</i>	●●● Japan Brazil <i>JAPON</i> <i>BRAZIL</i>	●●●● Canada Mexico <i>Canada</i> <i>MEXICAN</i>	●●●● Morocco Malaysia <i>MARRUECOS</i> <i>Malaysia</i>
---	---	---	--

B What is the syllable stress in these words? Add the words to the chart in part A. Then listen and check.

English	Spanish	Arabic	Korean
Mexican	Honduras	Chinese	Peru

C **GROUP WORK** Are the words in part A countries, nationalities, or languages? Make a chart and add more words. Then check your answers in the appendix at the back of the book.

Countries	Nationalities	Languages
China	Chinese	Chinese
Mexico	Mexican	Spanish

5 WHERE ARE THEY FROM?

A Where are these people from? Check (✓) your guesses.



1 Penelope Cruz

- Mexico
- France
- Spain



2 Robert Pattinson

- the U.S.
- the U.K.
- Canada



3 Haru Nomura

- South Korea
- Japan
- China



4 Cate Blanchett

- Australia
- New Zealand
- South Africa



5 Javier Hernández

- Brazil
- Mexico
- Chile

B **PAIR WORK** Compare your guesses. Then check your answers at the bottom of the page.

- A: Is Penelope Cruz from Mexico?
 B: No, she's not.
 A: Is she from France?

Answers: 1. Spain 2. the U.K. 3. Japan 4. Australia 5. Mexico

Wh-questions with be

What's your name?

My name is Jill.

Where are you from?

I'm from Canada.

How are you today?

I'm just fine.

Who's that?

He's my brother.

How old is he?

He's twenty-one.

What's he like?

He's very nice.

Who's = Who is

Who are they?

They're my classmates.

Where are they from?

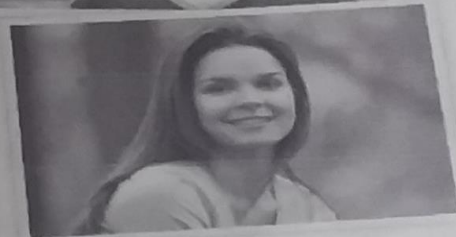
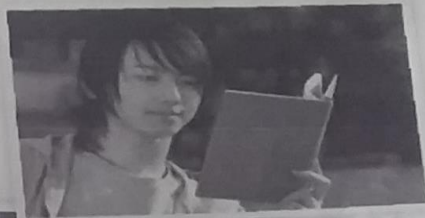
They're from Rio.

What's Rio like?

It's very beautiful.

- A** Complete the conversations with Wh-questions. Then practice with a partner.

- A: Look! Who's that ?
 B: Oh, he's a new student.
 A: What's your name ?
 B: I think his name is Ming.
 A: Ming? Where are they from ?
 B: He's from China.
- A: Serhat, where are you from ?
 B: I'm from Turkey - from Istanbul.
 A: What's he like ?
 B: Istanbul is very old and beautiful.
 A: What's your name ?
 B: My last name is Erdogan.
- A: Hi, John. How are you today ?
 B: I'm just fine. My friend Teresa is here this week - from Argentina.
 A: Oh, cool. Who's that ?
 B: She's really friendly.
 A: How old is he ?
 B: She's twenty-eight years old.



- B PAIR WORK** Write five Wh-questions about your partner and five Wh-questions about your partner's best friend. Then ask and answer the questions.

Partner

Where are you from?

Partner's best friend

Who's your best friend?


2 Wh-questions with *be*

- ▶ Use *what* to ask about things. Use *where* to ask about places. Use *Who* to ask about people. Use *What ... like?* to ask for a description.
- ▶ Use *how* to ask for a description: **How are** you today? Use *How old* to ask about age: **How old** is he?
- ▶ In answers about age, you can use only the number or the number + *years old*:
He's **18**. OR He's **18 years old**.

Complete the questions with how, what, where, or who. Then match the questions with the answers.

1. Who is that? d
 2. How is her name? c
 3. What is she like? f
 4. How old is she? b
 5. Where is your family from? a
 6. Who is Bangkok like? e
- a. We're from Thailand – from Bangkok.
 - b. She's 16.
 - c. Her name is Nittaya.
 - d. She's my sister.
 - e. It's really beautiful.
 - f. She's a little shy.

9 WORD POWER Descriptions

A  Listen and practice.



- | | | | | |
|-----------------|--------------|------------|-------------|---------|
| a. pretty | d. talkative | g. serious | j. tall | m. thin |
| b. handsome | e. quiet | h. shy | k. friendly | |
| c. good-looking | f. funny | i. short | l. heavy | |



**Nombre de alumno: cleybi morales
Marroquín**

Nombre del profesor:

Nombre del trabajo: ejercicios

Materia: ingles

Grado: primero

Grupo:

Frontera Comalapa, Chiapas a 16 de octubre de 2020.