

HISTOGRAMA

PRECENTO AL ALUMNO: ABNER URIBE HERNANDEZ MENDEZ

PROFESOR: MAGNER JOEL HERRERA

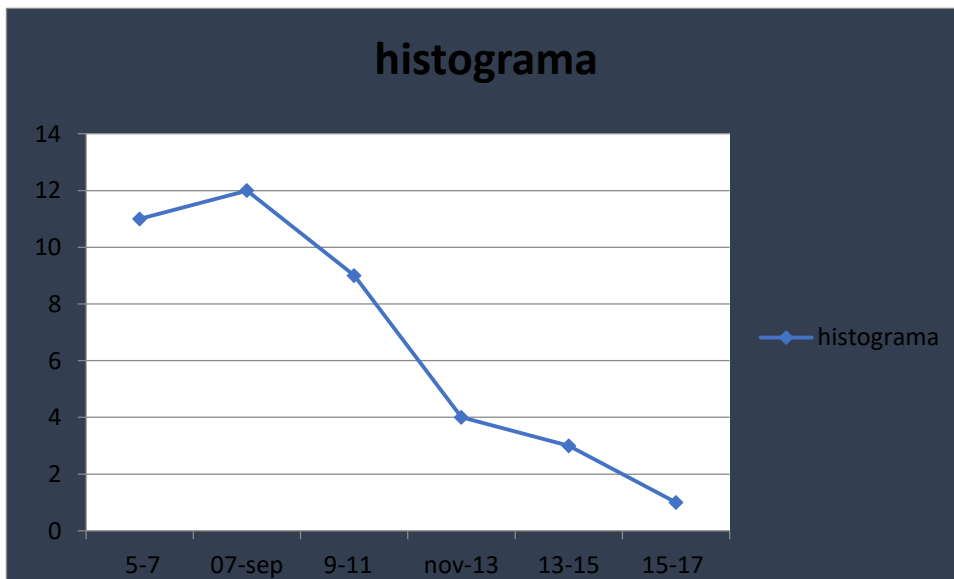
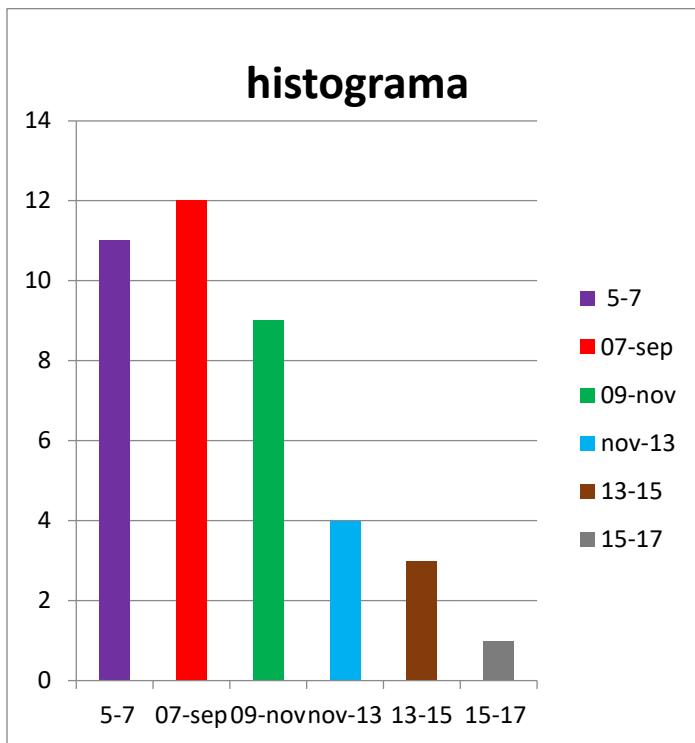
CUATRIMESTRE: 4

GRUPO: C

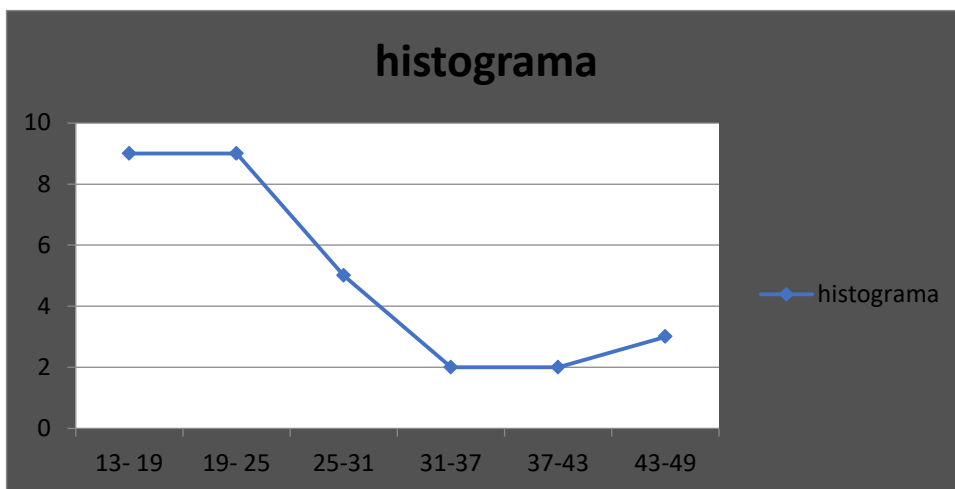
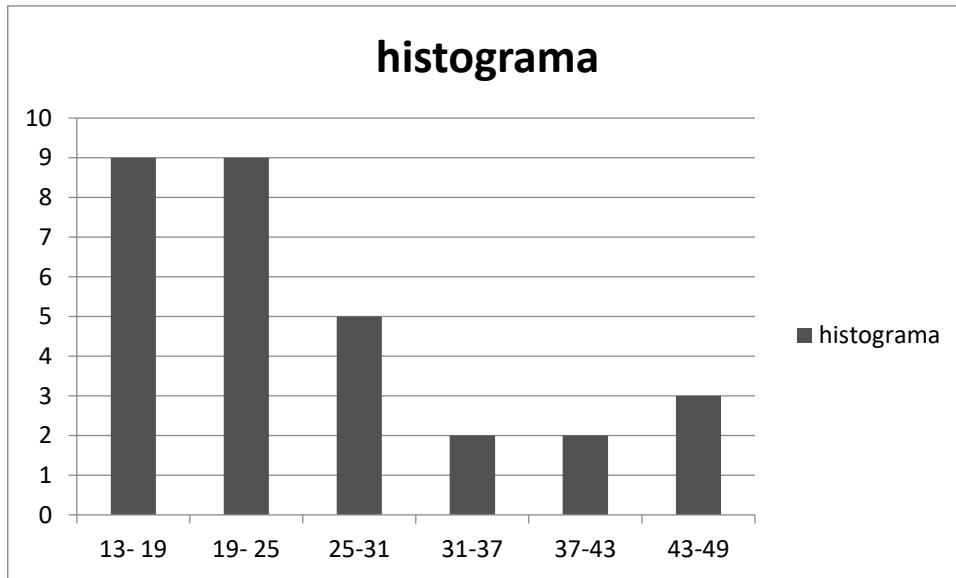
MODALIDAD: SEMIESCOLARIZADO

FRONTERA COMALAPA CHIAPAS, A 15 DE NOVIEMBRE DEL 2020

## EJERCICIO. 1

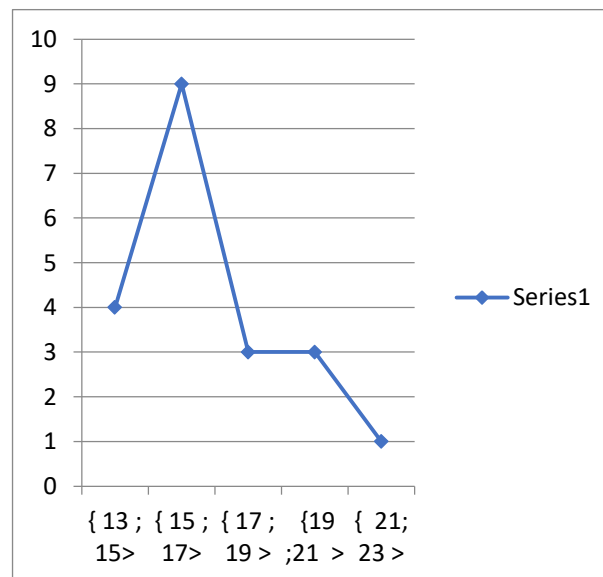
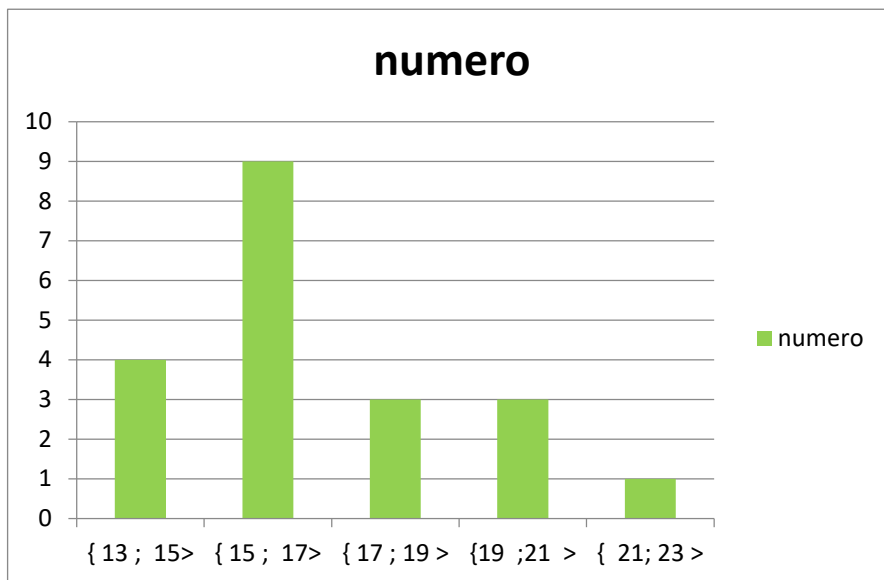


## EJERCICIO. N, 2

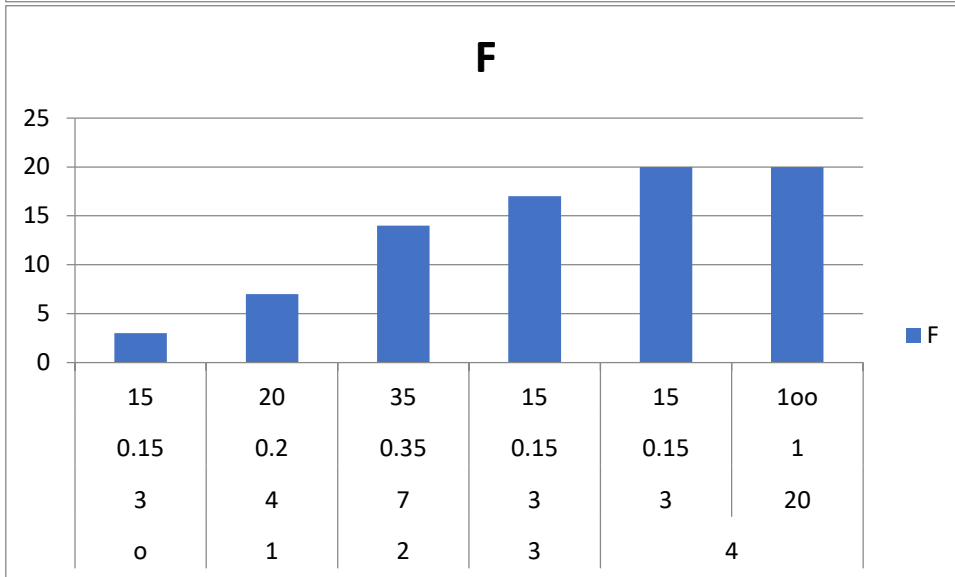
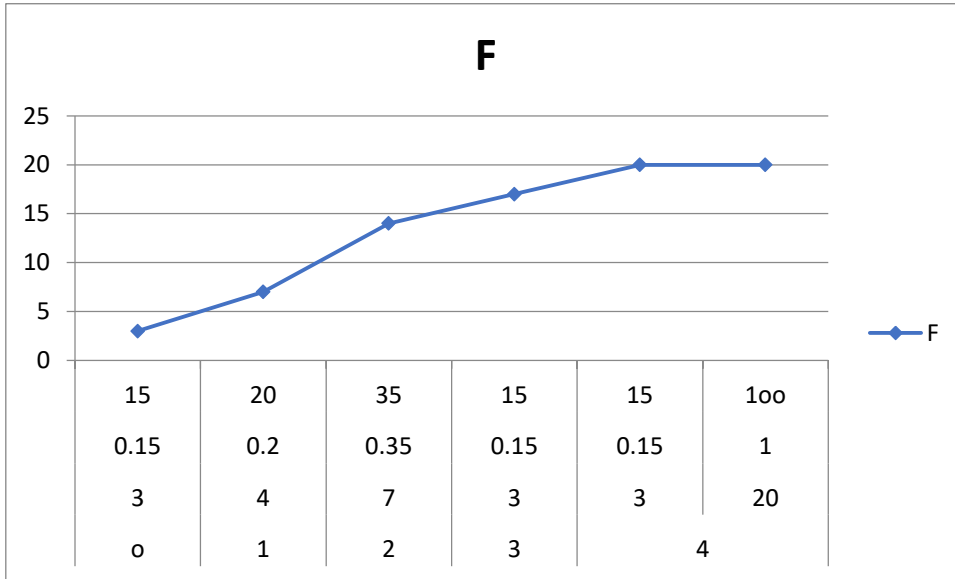


### EJERCICIO, N. 3

promedio	numero
{ 13 ; 15 >	4
{ 15 ; 17 >	9
{ 17 ; 19 >	3
{ 19 ; 21 >	3
{ 21 ; 23 >	1
TOTAL	20



# EJERCICIO. 4



1	3	2	3	1
2	2	0	3	0
4	2	1	2	2
0	1	4	2	4

Formula para la tabla

$$f_{ri} = \frac{f_i}{n}$$

$$f_{r1} = \frac{f_1}{n} = \frac{3}{20} = 0.15$$

$$f_{r2} = \frac{f_2}{n} = \frac{4}{20} = 0.2$$

$$f_{r3} = \frac{f_3}{n} = \frac{7}{20} = 0.35$$

$$f_{r4} = \frac{f_4}{n} = \frac{3}{20} = 0.15$$

$$f_{r5} = \frac{f_5}{n} = \frac{3}{20} = 0.15$$

$$\%i = f_{ri} \times 100$$

$$f_{r1} \times 100 \% = 0.15 = 15$$

$$f_{r2} \times 100 \% = 0.2 = 20$$

$$f_{r3} \times 100 \% = 0.35 = 35$$

$$f_{r4} \times 100 \% = 0.15 = 15$$

$$f_{r5} \times 100 \% = 0.15 = 15$$

$X_i$	$f_i$	$f_r$	$\%$	$f$
0	3	0.15	15	3
1	4	0.2	20	7
2	7	0.35	35	14
3	3	0.15	15	17
4	3	0.15	15	20
total	20	1	100	20