

50	49	25	50	47
29	46	34	48	25
20	33	49	40	33
31	39	43	43	35
28	23	20	44	31

Ejercicio 1 Todo debe estar hecho a mano, a lapicero tinta azul y de una manera legible y

DATOS AGRUPADOS ↓

Rango:  $\frac{N_{\text{mayor}} - N_{\text{menor}}}{N_{\text{Intervalos}}}$   $\sum f_i = 25$   
 $\sum f_i \bar{x} = 907.5$

Rango:  $\frac{50 - 20}{6} = \frac{30}{6} = 5$

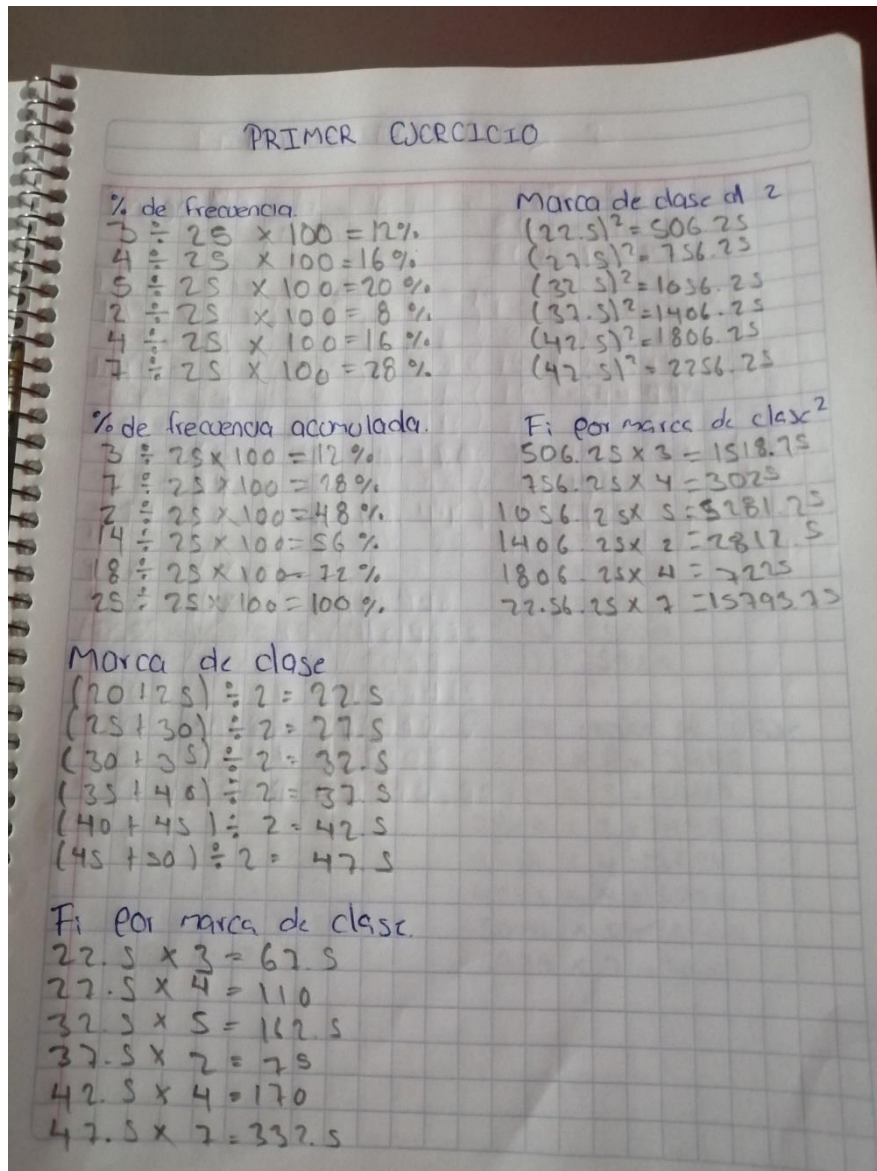
INTERVALOS	$f_i$	% $f_i$	$f_i \bar{x}$	% $f_i \bar{x}$	$x_i$
20 - 25	3	12	3	12	22.5
25 - 30	4	16	7	28	27.5
30 - 35	5	20	12	48	32.5
35 - 40	2	8	14	56	37.5
40 - 45	4	16	18	72	42.5
45 - 50	7	28	25	100	45.5

$f_i \bar{x}$	$x^2$	$f_i \bar{x}^2$
67.5	506.25	1518.75
110	756.25	3025
162.5	1056.25	5281.25
75	1406.25	2812.5
170	1806.25	7225
322.5	2256.25	15793.75

$\sum f_i \bar{x} =$

ordenada, debe tener todos los procedimientos para poder ser calificada



80	75	71	80	71	44
38	56	80	42	68	45
70	40	75	41	53	54
78	42	66	45	64	58
55	56	73	56	41	64
38	67	79	49	44	38

DATOS AGRUPADOS 2

Rango =  $\frac{80-36}{7} = 6$

$\sum F_i = 36$   
 $\sum F_i \bar{x} = 2112$   
 $\sum F_i \bar{x}^2 = 130952$

INTERVALOS	$F_i$	% $F_i$	$F_{i0}$	% $F_{i0}$	$X_i$
38-44	8	22.22	8	22.22	41
44-50	5	13.88	13	36.11	47
50-56	3	8.33	16	44.44	53
56-62	4	11.11	20	55.55	59
62-68	4	11.11	24	66.66	65
68-74	5	13.88	29	80.55	71
74-80	7	19.44	36	100	77

$F_i X_i$	$X_i^2$	$F_i X_i^2$
328	1681	13448
255	2209	11045
159	2809	8427
236	3481	13924
260	4225	16900
355	5041	25205
539	5929	4503



## SEGUNDO EJERCICIO

% de frecuencia

$$8 \div 36 \times 100 = 22.22$$

$$5 \div 36 \times 100 = 13.88$$

$$3 \div 36 \times 100 = 8.33$$

$$4 \div 36 \times 100 = 11.11$$

$$4 \div 36 \times 100 = 11.11$$

$$5 \div 36 \times 100 = 13.88$$

$$7 \div 36 \times 100 = 19.44$$

$F_i$  por marca de clase

$$41 \times 8 = 328$$

$$45 \times 5 = 235$$

$$53 \times 3 = 159$$

$$59 \times 4 = 236$$

$$65 \times 4 = 260$$

$$71 \times 5 = 355$$

$$77 \times 7 = 539$$

% de frecuencia acumulada

$$8 \div 36 \times 100 = 22.22$$

$$13 \div 36 \times 100 = 36.11$$

$$16 \div 36 \times 100 = 44.44$$

$$20 \div 36 \times 100 = 55.55$$

$$24 \div 36 \times 100 = 66.66$$

$$29 \div 36 \times 100 = 80.55$$

$$36 \div 36 \times 100 = 100$$

Marca de clase al 2

$$(41)^2 = 1681$$

$$(47)^2 = 2209$$

$$(53)^2 = 2809$$

$$(59)^2 = 3481$$

$$(65)^2 = 4225$$

$$(71)^2 = 5041$$

$$(77)^2 = 5929$$

Marca de clase

$$38 + 44 \div 2 = 41$$

$$44 + 50 \div 2 = 47$$

$$50 + 56 \div 2 = 53$$

$$56 + 62 \div 2 = 59$$

$$62 + 68 \div 2 = 65$$

$$68 + 74 \div 2 = 71$$

$$74 + 80 \div 2 = 77$$

$F_i$  por marca de clase

$$1681 \times 8 = 13448$$

$$2209 \times 5 = 11045$$

$$2809 \times 3 = 8427$$

$$3481 \times 4 = 13924$$

$$4225 \times 4 = 16900$$

$$5041 \times 5 = 25205$$

$$5929 \times 7 = 4503$$