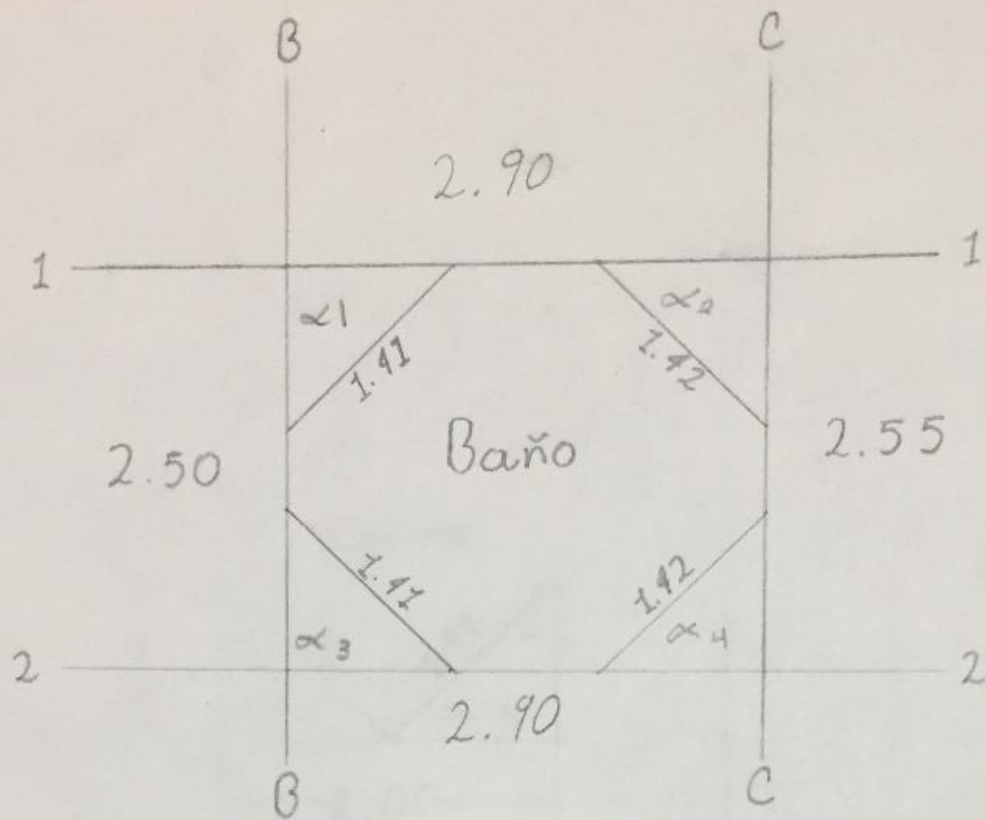


# LEVANTAMIENTO



- Lic. Arquitectura
- 4to cuatrimestre
- Rudy Guillén Pohlenz
- PEDRO ALBERTO GARCIA LOPEZ
- TOPOGRAFIA

16/10/2020



$$\alpha_1 = \text{Sen } \frac{\theta}{2} = \frac{0.705}{1} \rightarrow \text{Sen } \frac{\theta}{2} = 0.705$$

$$\frac{\theta}{2} = 44^{\circ} 49' 46.36'' \rightarrow \underline{\theta = 89^{\circ} 39' 32.72'' //}$$

$$\alpha_2 = \text{Sen } \frac{\theta}{2} = \frac{0.71}{1} \rightarrow \text{Sen } \frac{\theta}{2} = 0.71$$

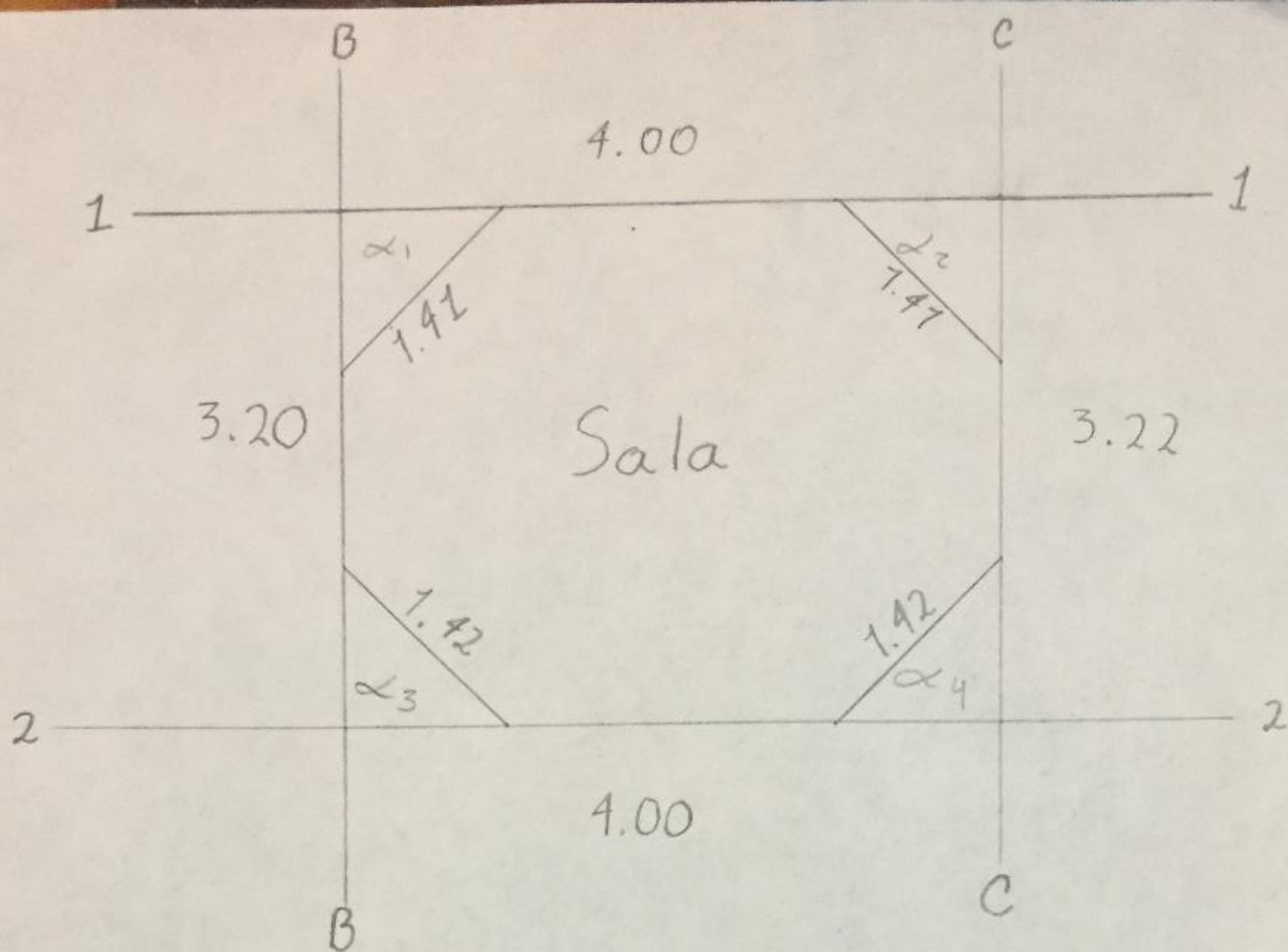
$$\frac{\theta}{2} = 45^{\circ} 14' 5.7'' \rightarrow \underline{\theta = 90^{\circ} 28' 11.39'' //}$$

$$\alpha_3 = \text{Sen } \frac{\theta}{2} = \frac{0.705}{1} \rightarrow \text{Sen } \frac{\theta}{2} = 0.705$$

$$\frac{\theta}{2} = 44^{\circ} 49' 46.36'' \rightarrow \underline{\theta = 89^{\circ} 39' 32.72'' //}$$

$$\alpha_4 = \text{Sen } \frac{\theta}{2} = \frac{0.71}{1} \rightarrow \text{Sen } \frac{\theta}{2} = 0.71$$

$$\frac{\theta}{2} = 45^{\circ} 14' 5.7'' \rightarrow \underline{\theta = 90^{\circ} 28' 11.39'' //}$$



$$\alpha_1 = \text{Sen} \frac{\theta}{2} = \frac{0.705}{1} \rightarrow \text{Sen} \frac{\theta}{2} = 0.705$$

$$\frac{\theta}{2} = 44^\circ 49' 46.36'' \rightarrow \underline{\theta = 89^\circ 39' 32.72''}$$

$$\alpha_2 \text{ Sen} \frac{\theta}{2} = \frac{0.705}{1} \rightarrow \text{Sen} \frac{\theta}{2} = 0.705$$

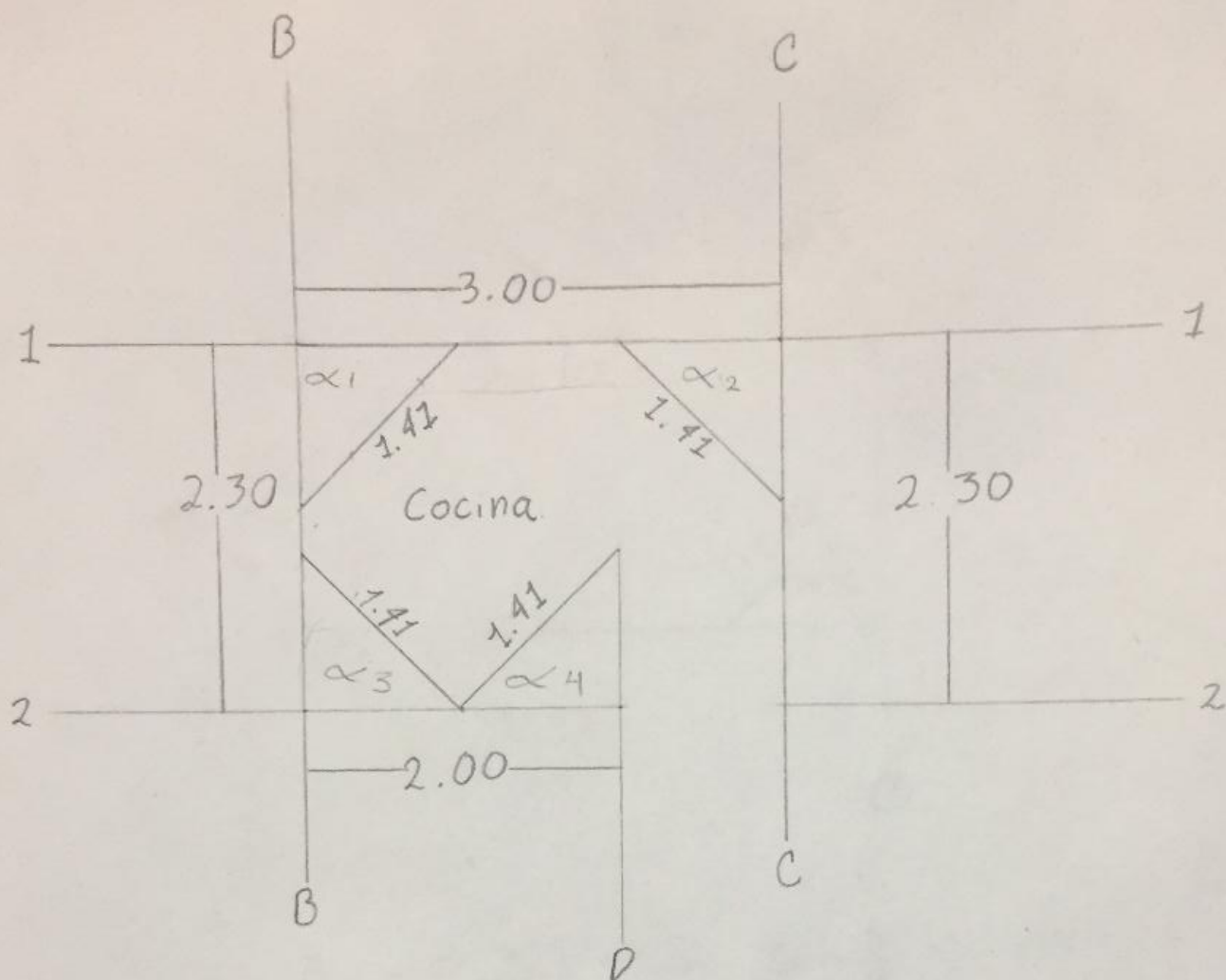
$$\frac{\theta}{2} = 44^\circ 49' 46.36'' \rightarrow \underline{\theta = 89^\circ 39' 32.72''}$$

$$\alpha_3 = \text{Sen} \frac{\theta}{2} = \frac{0.71}{1} \rightarrow \text{Sen} \frac{\theta}{2} = 0.71$$

$$\frac{\theta}{2} = 45^\circ 14' 5.7'' \rightarrow \underline{\theta = 90^\circ 28' 11.39''}$$

$$\alpha_4 = \text{Sen} \frac{\theta}{2} = \frac{0.71}{1} \rightarrow \text{Sen} \frac{\theta}{2} = 0.71$$

$$\frac{\theta}{2} = 45^\circ 14' 5.7'' \rightarrow \underline{\theta = 90^\circ 28' 11.39''}$$



$$\alpha_1 = \text{Sen} \frac{\theta}{2} = \frac{0.705}{1} \rightarrow \text{Sen} \frac{\theta}{2} = 0.705$$

$$\frac{\theta}{2} = 44^\circ 49' 46.36'' \rightarrow \theta = 89^\circ 39' 32.72'' //$$

$$\alpha_2 = \text{Sen} \frac{\theta}{2} = \frac{0.705}{1} \rightarrow \text{Sen} \frac{\theta}{2} = 0.705$$

$$\frac{\theta}{2} = 44^\circ 49' 46.36'' \rightarrow \theta = 89^\circ 39' 32.72'' //$$

$$\alpha_3 = \text{Sen} \frac{\theta}{2} = \frac{0.705}{1} \rightarrow \text{Sen} \frac{\theta}{2} = 0.705$$

$$\frac{\theta}{2} = 44^\circ 49' 46.36'' \rightarrow \theta = 89^\circ 39' 32.72'' //$$

$$\alpha_4 = \text{Sen} \frac{\theta}{2} = \frac{0.705}{1} \rightarrow \text{Sen} \frac{\theta}{2} = 0.705$$

$$\frac{\theta}{2} = 44^\circ 49' 46.36'' \rightarrow \theta = 89^\circ 39' 32.72'' //$$