

Lizbeth Gomez

### 3 GRAMMAR FOCUS

#### Negative statements and yes/no questions with be

I'm **not** from New York.  
 You're **not** late.  
 She's **not** from Russia.  
 He's **not** from Italy.  
 It's **not** English.  
 We're **not** from Japan.  
 You're **not** early.  
 They're **not** in Mexico.

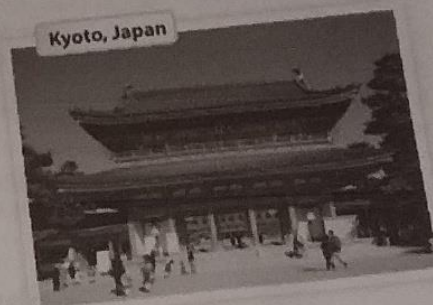
Are you from California?  
 Am I early?  
 Is she from Brazil?  
 Is he from Chile?  
 Is it Korean?  
 Are you from China?  
 Are we late?  
 Are they in Canada?

	I am.	I'm	not.
	you are.	you're	not.
	she is.	she's	not.
Yes,	he is.	No, he's	not.
	it is.	it's	not.
	we are.	we're	not.
	you are.	you're	not.
	they are.	they're	not.

We're = We are

**A** Complete the conversations. Then practice with a partner.

- A: Hiroshi, are you and Maiko from Japan?  
 B: Yes, we are from Japan.  
 A: Oh? you're not from Tokyo?  
 B: No, I'm not. I am from Kyoto.
- A: It is Laura from the U.S.?  
 B: No, she not. She's from the U.K.  
 A: is she from London?  
 B: Yes, she is. But her parents are from Italy. we're not from the U.K. originally.  
 A: is Laura's first language Italian?  
 B: No, it's not. it's English.
- A: is it Selina and Carlos from Mexico?  
 B: No, they are not. they are from Brazil.  
 A: are you from Brazil, too?  
 B: No, I'm not. I'm from Peru.  
 A: So, is your first language Spanish?  
 B: Yes, it is.



**B** Match the questions with the answers. Then practice with a partner.

- |  |   |
|--|---|
| 1. Are you and your family from Canada? <u>1</u> | a. No, he's not. He's from Singapore.   |
| 2. Is your first language English? <u>3</u>      | b. Yes, she is. She's from California.  |
| 3. Are you Japanese? <u>2</u>                    | c. No, it's not. It's Japanese.         |
| 4. Is Mr. Ho from Hong Kong? <u>4</u>            | d. No, we're not. We're from Australia. |
| 5. Is your mother from the U.S.? <u>5</u>        | e. Yes, we are. We're from Kyoto.       |

**C PAIR WORK** Write five questions like the ones in part B. Then ask and answer your questions with a partner.

### 1 Negative statements and yes/no questions with be

- ▶ Use *be* + *not* to form negative statements: Ana **isn't** a student. (NOT: Ana is no a student.)
- ▶ *You* is a singular and a plural pronoun: Are **you** from Rio? Yes, I am./Yes, **we** are.

#### A Unscramble the words to write negative statements.

- in California / not / New York City / is  
New York City is not in California.
- London / not / from / we're  
we're not from London.
- not / you and Tim / in my class / are  
You and Tim not are in my class.
- is / my first language / Spanish / not  
my first language not is Spanish.
- from / my mother / not / is / Seoul  
my mother is not from Seoul.
- my keys / not / are / they  
they are not my keys.

#### B Complete the conversations.

- A: <sup>eres tu y tu familia de Mexico?</sup> Are you and your family from Mexico?  
B: No, we are not. we are from Guatemala.
- A: <sup>is</sup> Is your first language English?  
B: Yes, it is. My parents are from Australia.
- A: <sup>she is</sup> She is Kenji and his friend Japanese?  
B: Yes, she are. But they are in the U.S. now.
- A: <sup>Are</sup> Are my mother and I late?  
B: No, you do not. You arrived early!

#### 4 PRONUNCIATION Syllable stress

A *escucha y practica. Observa el acento en la sílaba.*  
Listen and practice. Notice the syllable stress.

●●● China	●●● Japan	●●●● Canada	●●●● Morocco
●●● Turkey	●●● Brazil	●●●● Mexico	●●●● Malaysia
●●● Spanish	●●● Peru	●●●● Mexican	●●●● Korean
●●● English	●●● .....	●●●● Chinese	●●●● honduras
●●● Arabic	●●● .....	●●●● .....	●●●● .....

B What is the syllable stress in these words? Add the words to the chart in part A. Then listen and check.

English ✓      Spanish ✓      Arabic ✓      Korean ✓  
Mexican ✓      Honduras ✓      Chinese ✓      Peru ✓

C **GROUP WORK** Are the words in part A countries, nationalities, or languages? Make a chart and add more words. Then check your answers in the appendix at the back of the book.

Countries	Nationalities	Languages
China	Chinese	Chinese
Mexico	Mexican	Spanish

#### 5 WHERE ARE THEY FROM?

A Where are these people from? Check (✓) your guesses.



**Penelope Cruz**

- Mexico
- France
- Spain

**Robert Pattinson**

- the U.S.
- the U.K.
- Canada

**Haru Nomura**

- South Korea
- Japan
- China

**Cate Blanchett**

- Australia
- New Zealand
- South Africa

**Javier Hernández**

- Brazil
- Mexico
- Chile

B **PAIR WORK** Compare your guesses. Then check your answers at the bottom of the page.

A: Is Penelope Cruz from Mexico?  
B: No, she's not.  
A: Is she from France?

Answers: 1. Spain 2. the U.K. 3. Japan 4. Australia 5. Mexico

## 8 GRAMMAR FOCUS

### Wh-questions with be

**What's your name?**

My name is Jill.

**Where are you from?**

I'm from Canada.

**How are you today?**

I'm just fine.

**Who's that?**

He's my brother.

**How old is he?**

He's twenty-one.

**What's he like?**

He's very nice.

Who's = Who is

**Who are they?**

They're my classmates.

**Where are they from?**

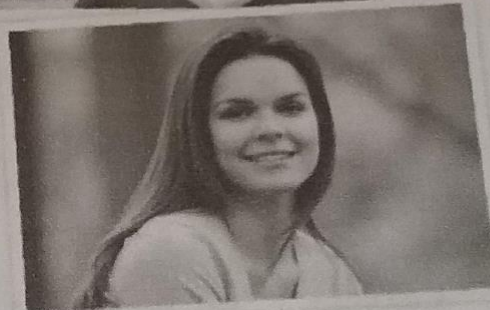
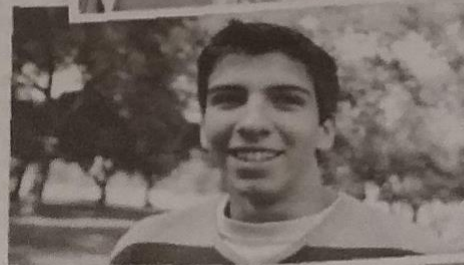
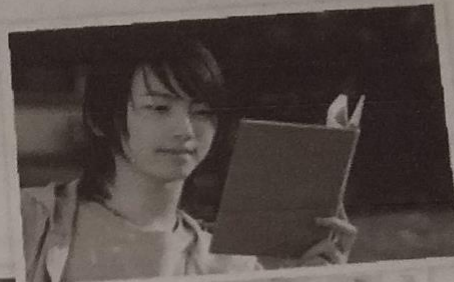
They're from Rio.

**What's Rio like?**

It's very beautiful.

**A** Complete the conversations with Wh-questions. Then practice with a partner.

- A: Look! Who's that ?  
 B: Oh, he's a new student.  
 A: What is your name  
 B: I think his name is Ming.  
 A: Ming? Where is it ?  
 B: He's from China.
- A: Serhat, Where are you from  
 B: I'm from Turkey - from Istanbul.  
 A: How is Istanbul?  
 B: Istanbul is very old and beautiful.  
 A: What is your surname?  
 B: My last name is Erdogan.
- A: Hi, John. How are you ?  
 B: I'm just fine. My friend Teresa is here this week - from Argentina.  
 A: Oh, cool. How is she ?  
 B: She's really friendly.  
 A: How old are you?  
 B: She's twenty-eight years old.



**B PAIR WORK** Write five Wh-questions about your partner and five Wh-questions about your partner's best friend. Then ask and answer the questions.

Partner

Where are you from?

Partner's best friend

Who's your best friend?

## 2 Wh-questions with be

- ▶ Use *what* to ask about things. Use *where* to ask about places. Use *Who* to ask about people. Use *What... like?* to ask for a description.
- ▶ Use *how* to ask for a description: **How are** you today? Use *How old* to ask about age: **How old** is he?
- ▶ In answers about age, you can use only the number or the number + *years old*:  
He's **18**. OR He's **18 years old**.

Complete the questions with *how*, *what*, *where*, or *who*. Then match the questions with the answers.

- |   |  |
|---|--|
| 1. <u>Who</u> is that? ... <u>d</u> ...               | a. We're from Thailand – from Bangkok. |
| 2. <u>what</u> is her name? ... <u>c</u> ...          | b. She's 16.                           |
| 3. <u>how</u> is she like? ... <u>f</u> ...           | c. Her name is Nittaya.                |
| 4. <u>how</u> old is she? ... <u>b</u> ...            | d. She's my sister.                    |
| 5. <u>where</u> is your family from? ... <u>a</u> ... | e. It's really beautiful.              |
| 6. <u>how</u> is Bangkok like? ... <u>e</u> ...       | f. She's a little shy.                 |

## 9 WORD POWER Descriptions

*escucha y practica*  
A Listen and practice.



- |                 |              |            |             |         |
|-----------------|--------------|------------|-------------|---------|
| a. pretty       | d. talkative | g. serious | j. tall     | m. thin |
| b. handsome     | e. quiet     | h. shy     | k. friendly |         |
| c. good-looking | f. funny     | i. short   | l. heavy    |         |