

Universidad  UDS
Del Sureste

Medicina humana

Docente: Dra. Yeni Karen
Canales Hernandez

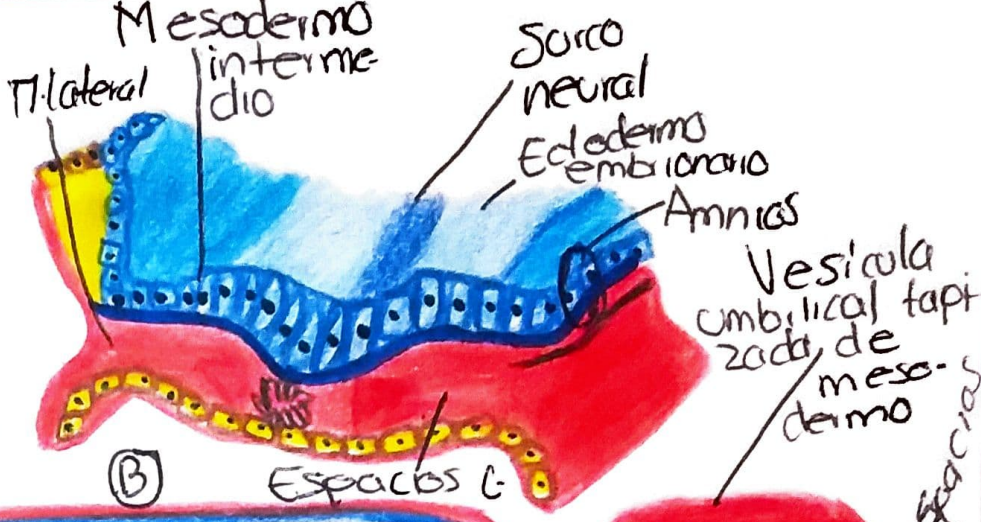
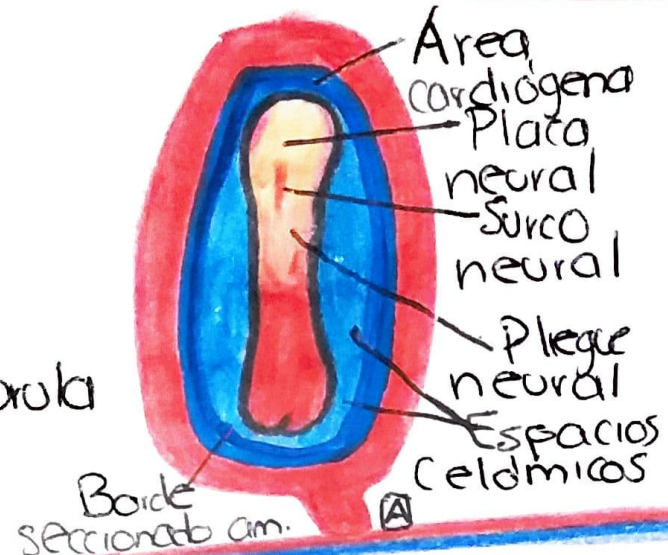
Alumna(a): Dama Paola
Vazquez Samayoa

Materia: Biología del
desarrollo

Trabajo: Mapa mental
"Neurulación"

Bibliografía: Slideshare -
Embriología - MOORE

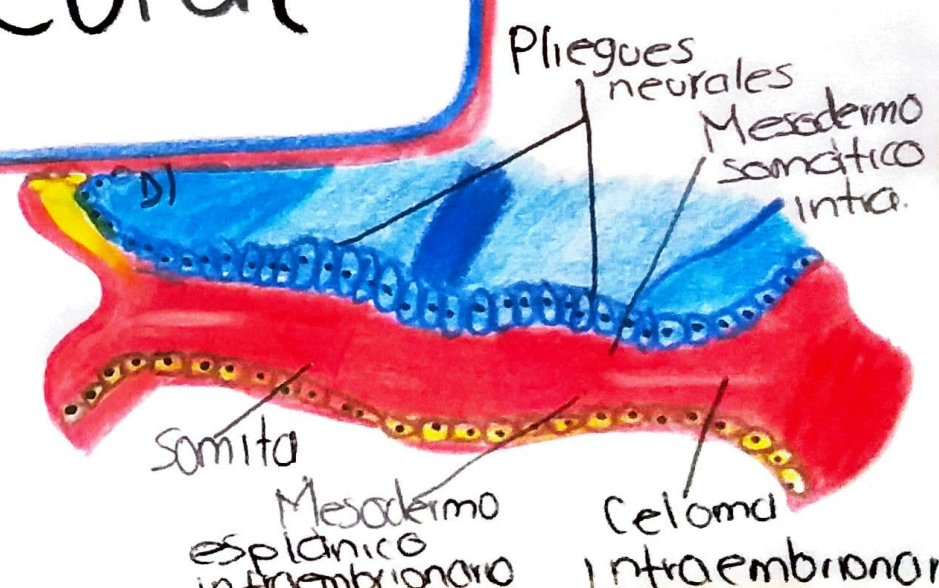
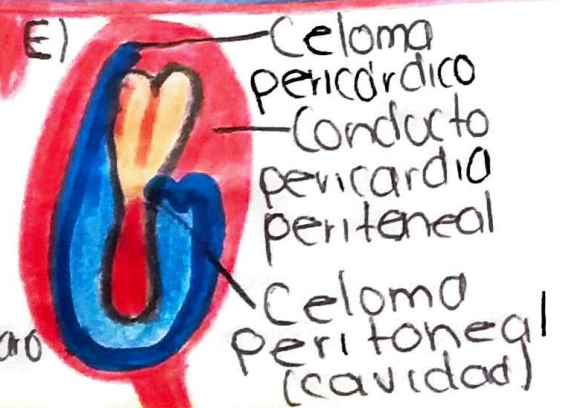
Embrión > Neurula

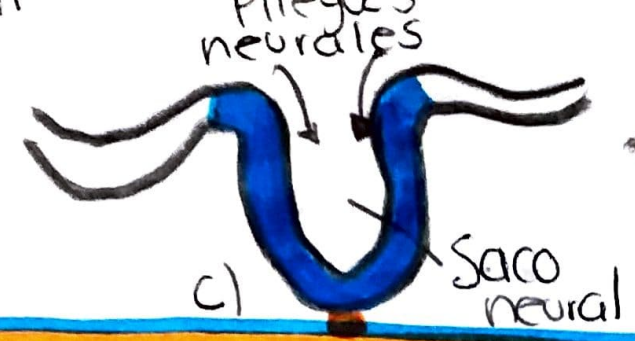
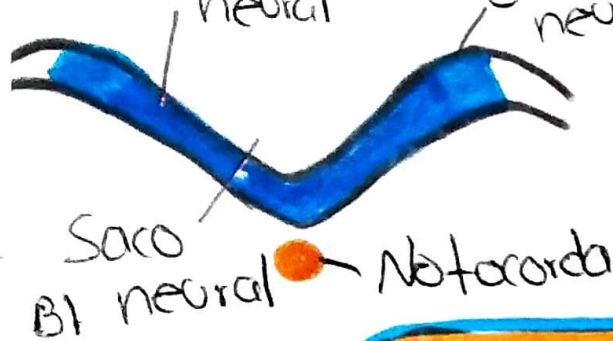


Neurulación: Formación del tubo neural



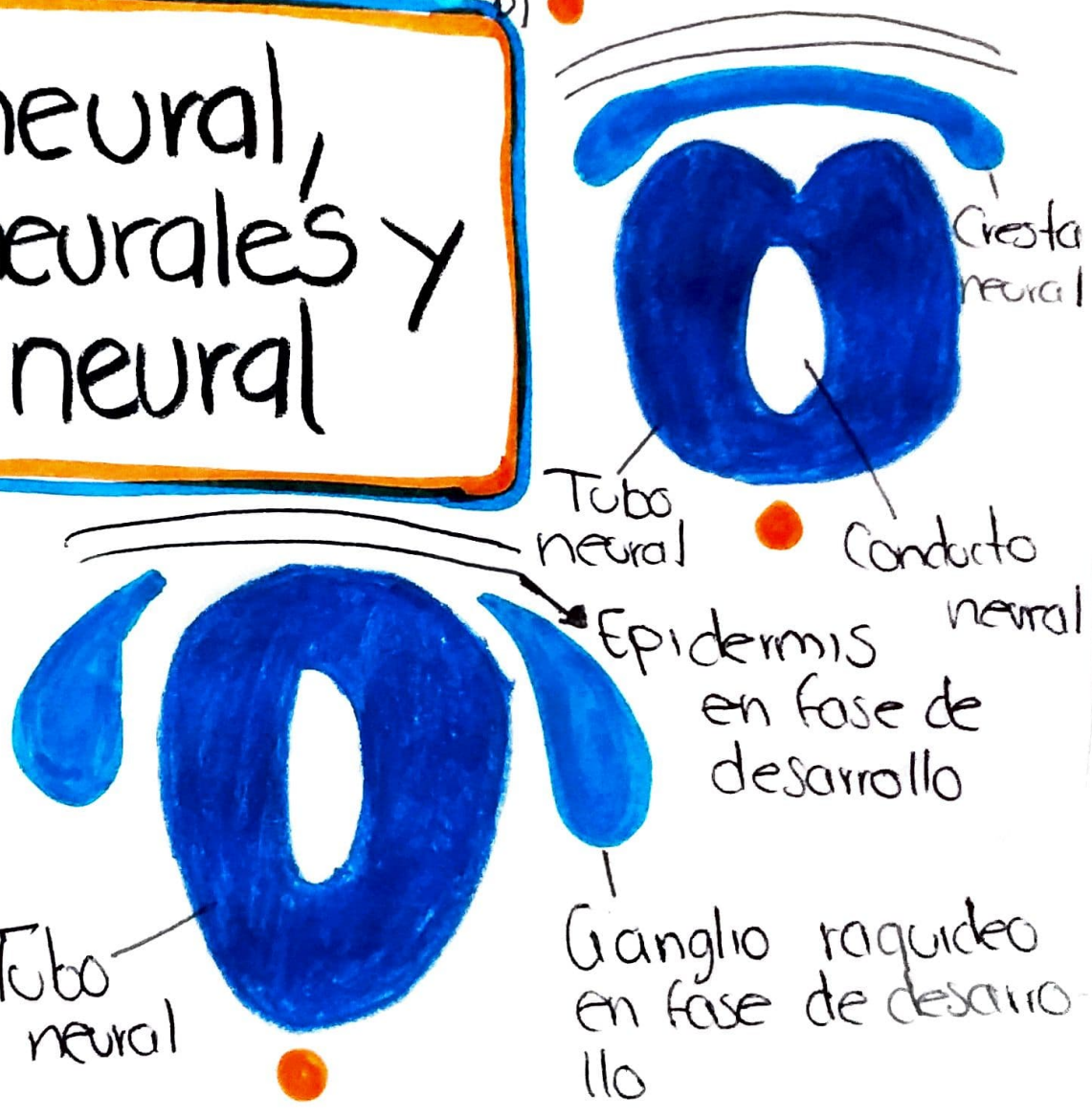
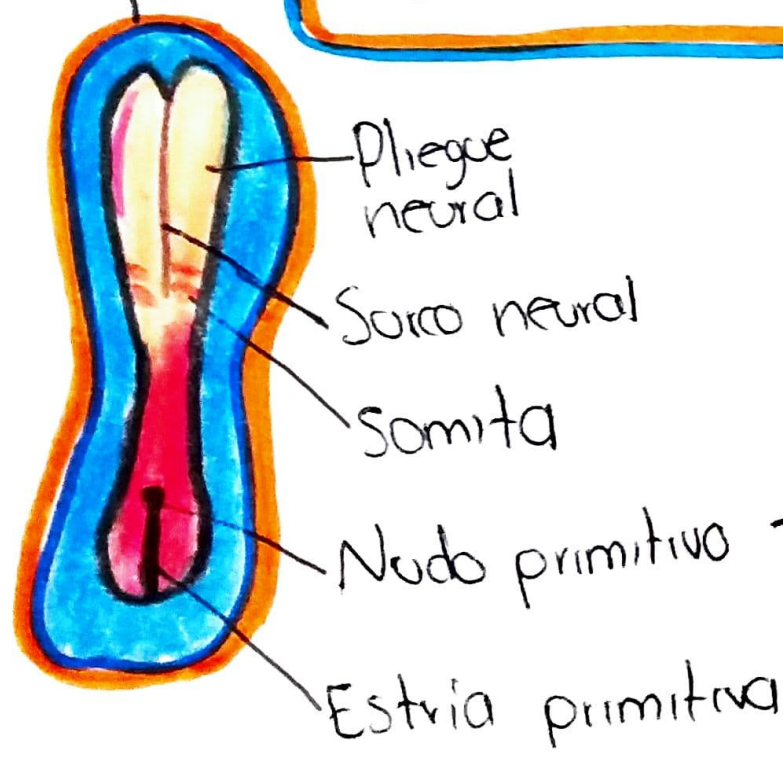
Somita
Plegues neurales
a punto de posición F)





Surco neural,
pliegues neurales y
cresta neural

Borde seccionado del cráneo

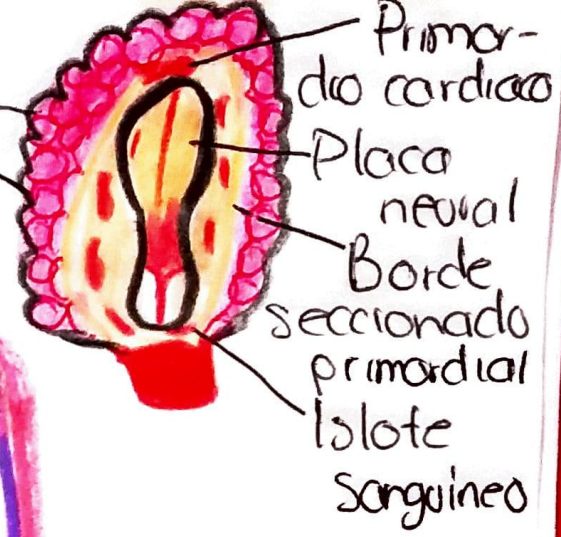




Vesicula umbilical (saco vitelino) con islotes sanguineos.

Vasos sanguineos en desarrollo

Vasculogenia y angiogenia



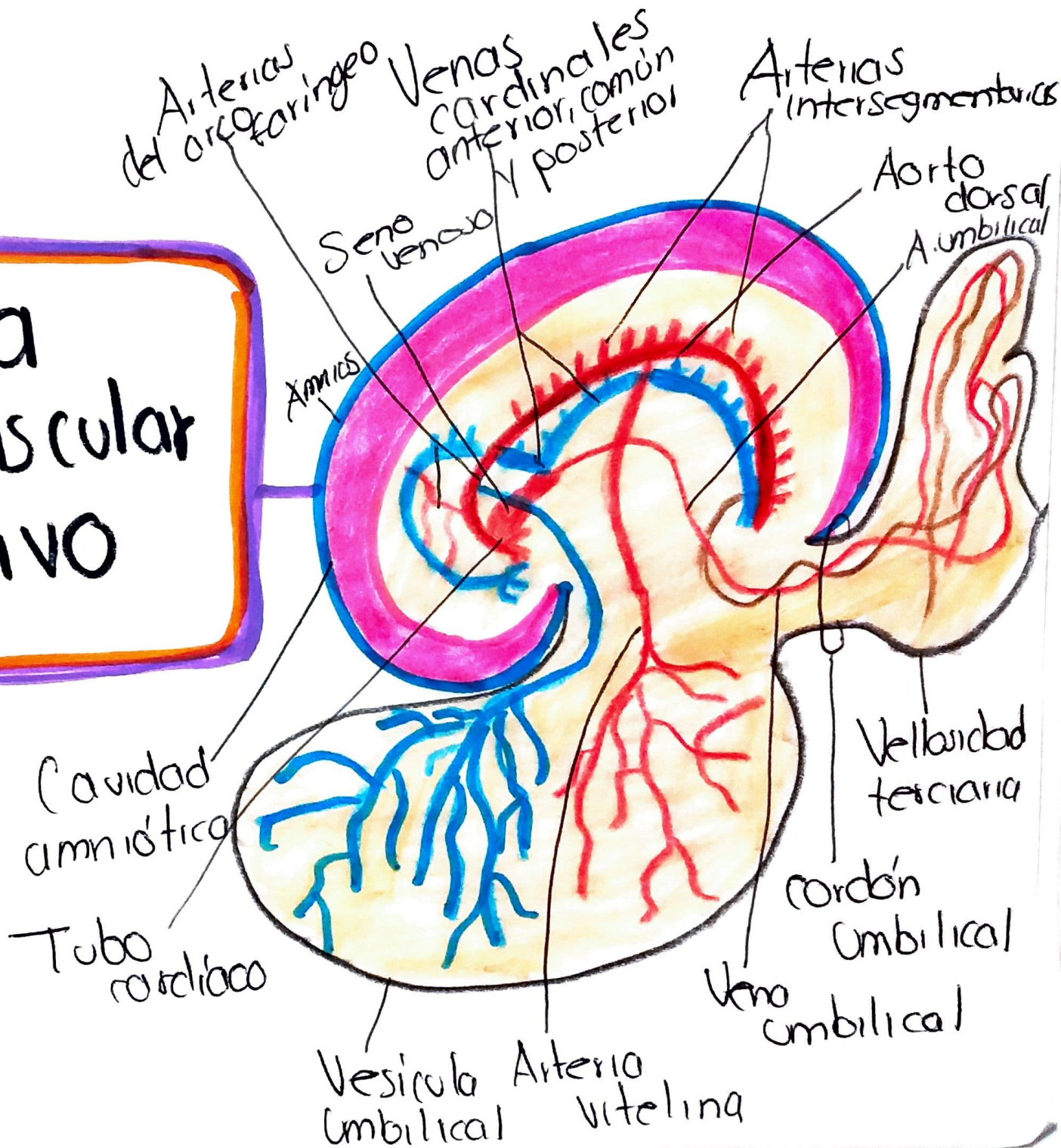
Luz de vaso sanguineo primordial



Vesicula Umbilical (Pared)

celulas sanguineas progenitoras

Sistema Cardiovascular primitivo



Vellosidades
Coriónicas

