

A stylized, colorful illustration of a city skyline at night. The buildings are rendered in various shades of blue, purple, and red. A bright red laser line cuts across the sky from the bottom left towards the top right, where a small white airplane is visible. The sky is dark with a few stars. In the foreground, there's a dark silhouette of a boat with two sails on the left, and a bridge or walkway with a railing in the middle ground. The overall aesthetic is modern and digital.

SANDRA GUADALUPE RUIZ MORALES

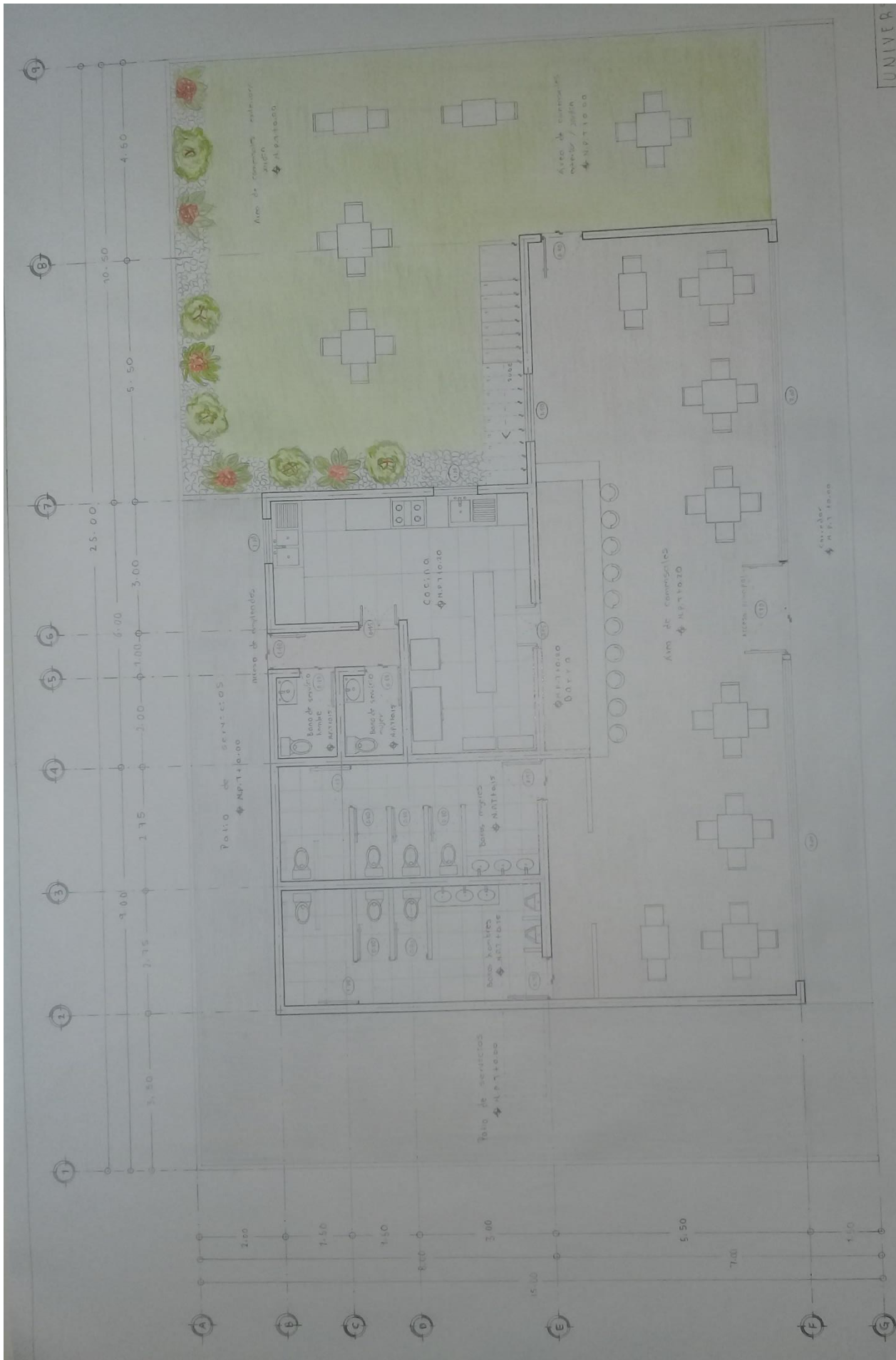
DISEÑO ARQUITECTÓNICO 1

Planta arquitectónica baja, cafetería

SANTIAGO GUILLEN VICTOR MANUEL

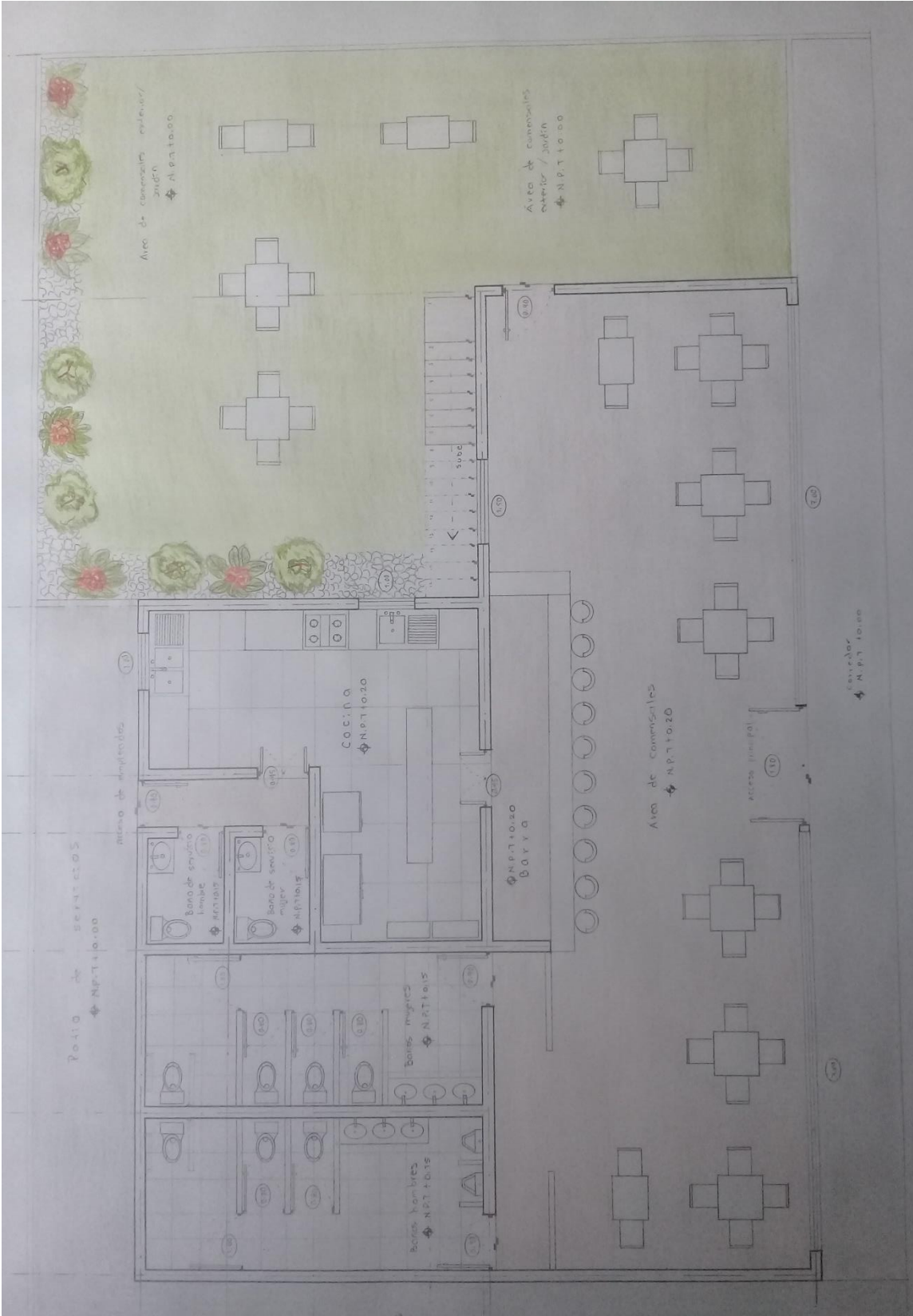
19 DE JUNIO DEL 2020

UDS
PASO A POR EL CAR



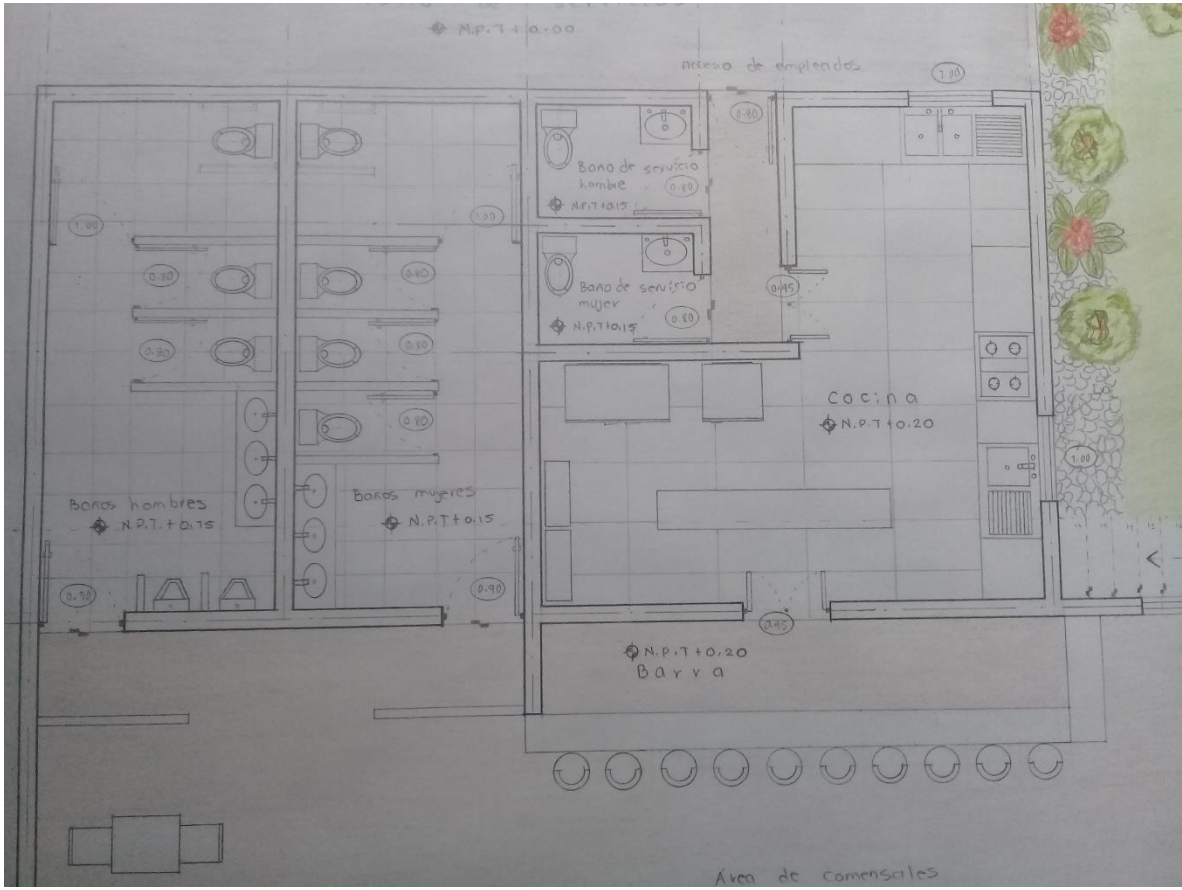
I PLANTA BAJA I

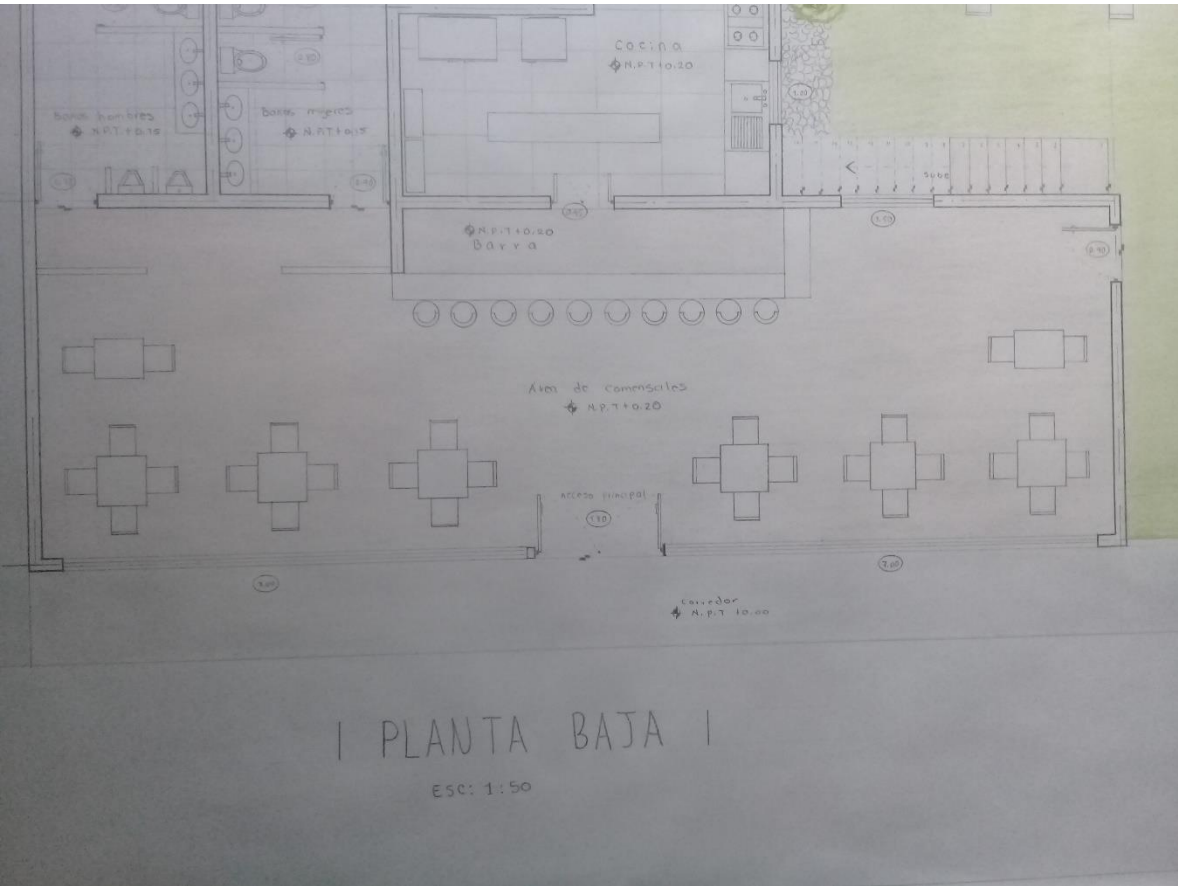
ESC: 1:50

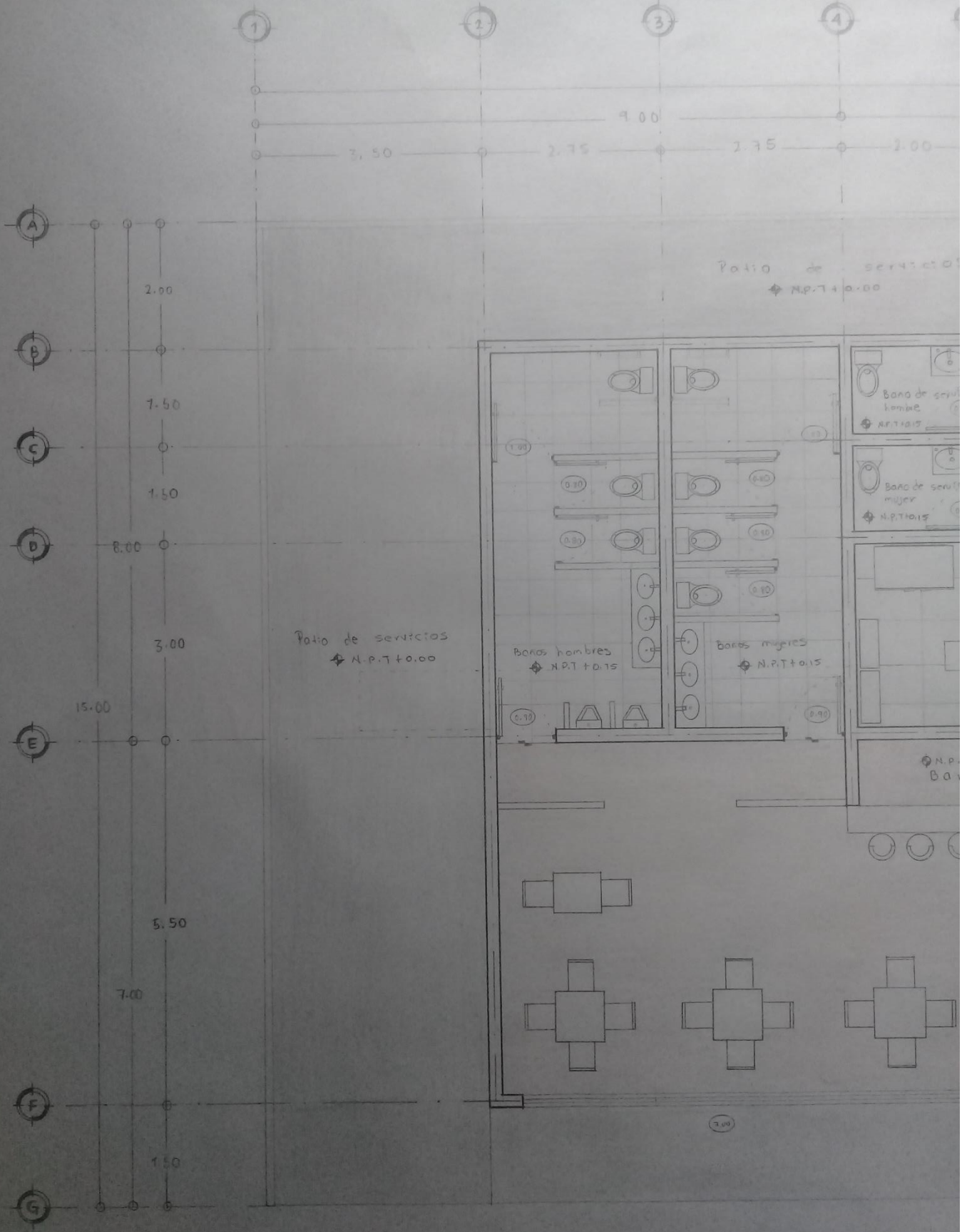


UNIVERS
ARQUITECTO

PIANTA BAJA |







I PLANT

2 3 4 5 6 7

3.50 2.75 9.00 1.75 2.00 1.00 6.00 3.00 25.00

Patio de servicios

⊕ N.P.T+0.00

Acceso de empleados

1.50

servicios
N.P.T+0.00

Barros hombres
⊕ N.P.T+0.15

Barros mujeres
⊕ N.P.T+0.15

Bano de servicio hombre
⊕ N.P.T+0.15

Bano de servicio mujer
⊕ N.P.T+0.15

Cocina
⊕ N.P.T+0.20

⊕ N.P.T+0.20
Barra

Área de comensales
⊕ N.P.T+0.20

Acceso principal

1.80

