

A stylized, colorful illustration of a city skyline at night. The buildings are rendered in various shades of blue, purple, and red, with some glowing. A prominent red laser line cuts across the sky from the bottom left towards the top right, where a small white airplane is visible. The sky is dark with a few stars. In the foreground, there's a dark silhouette of a boat with two large sails on the left, and a bridge or walkway with a railing in the middle ground. The overall aesthetic is modern and digital.

SANDRA GUADALUPE RUIZ MORALES

DISEÑO ARQUITECTONICO 1

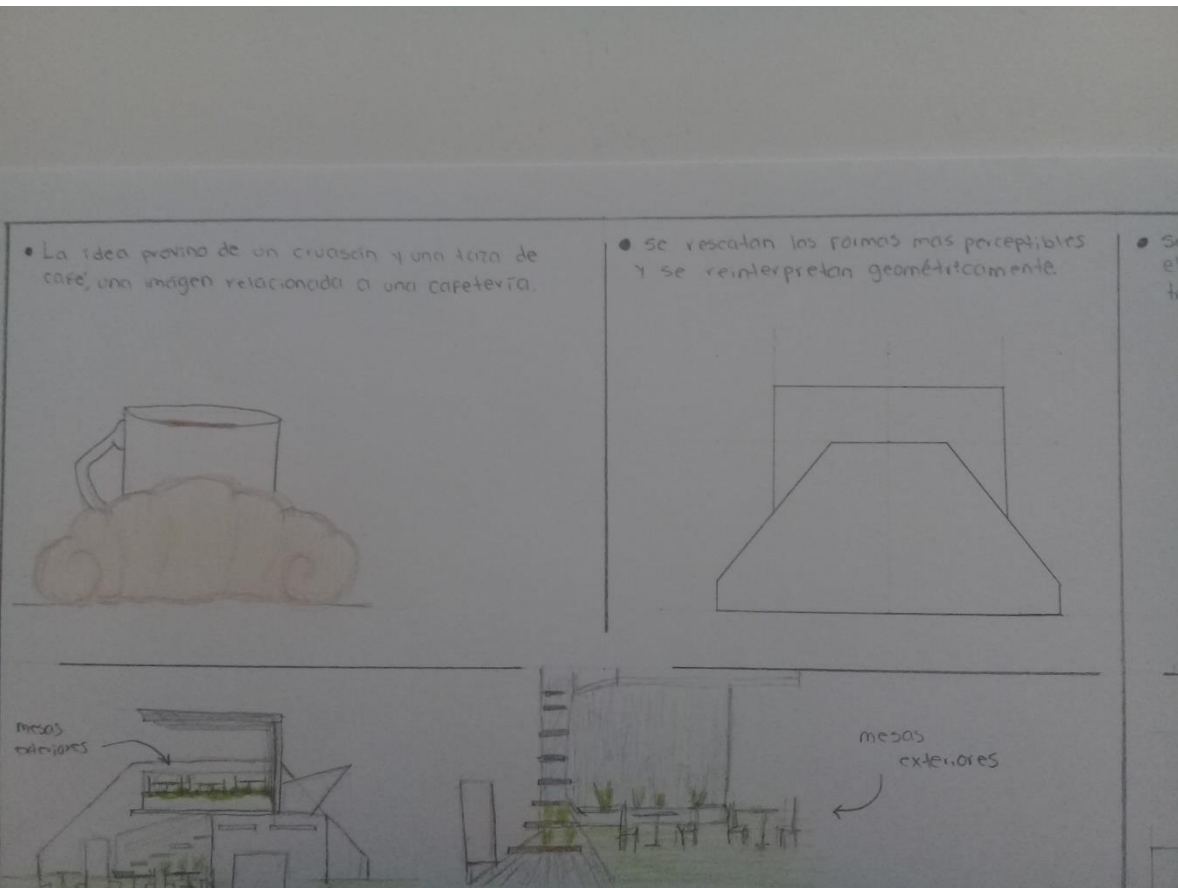
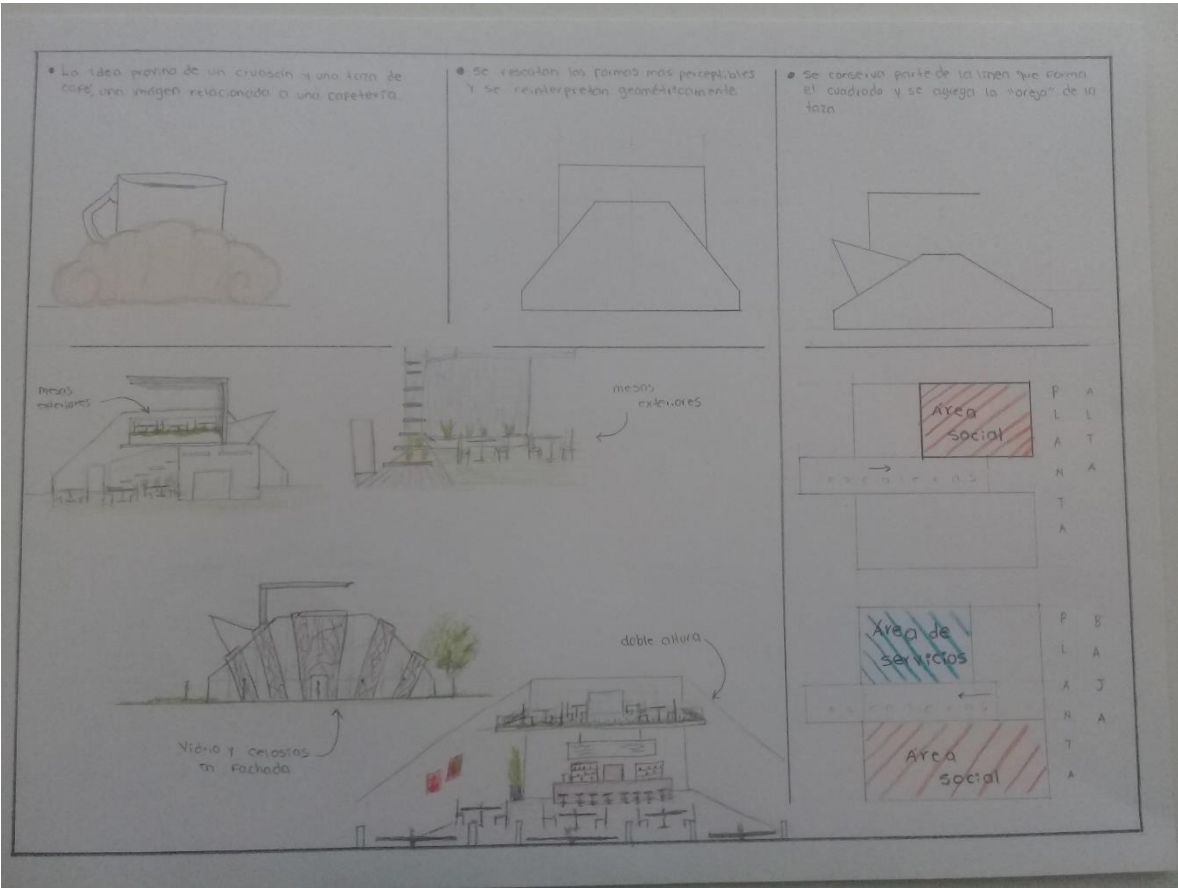
Concepto, emplazamiento y áreas

SANTIAGO GUILLEN VICTOR MANUEL

12 DE JUNIO DEL 2020

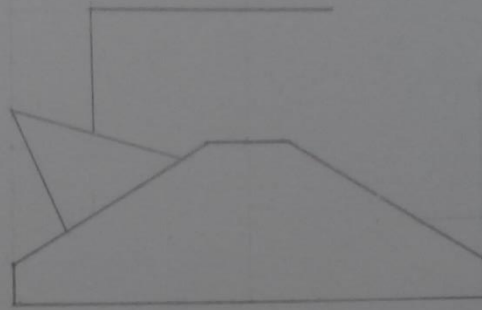
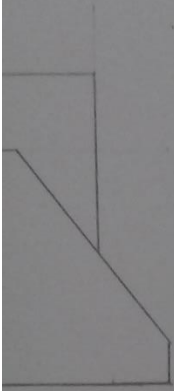
The logo for UDS (Universidad de Sonora) features a stylized 'U' composed of three curved lines on the left, followed by the letters 'UDS' in a bold, sans-serif font. Below the letters, the text 'UNIVERSIDAD DE SONORA' is written in a smaller, all-caps font.

UDS  
UNIVERSIDAD DE SONORA

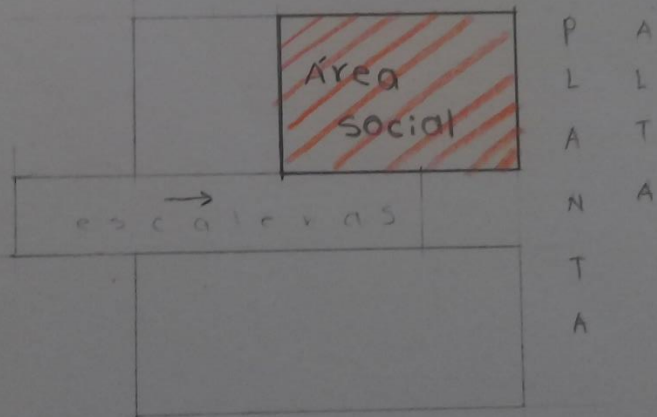


as perceptibles  
ticamente.

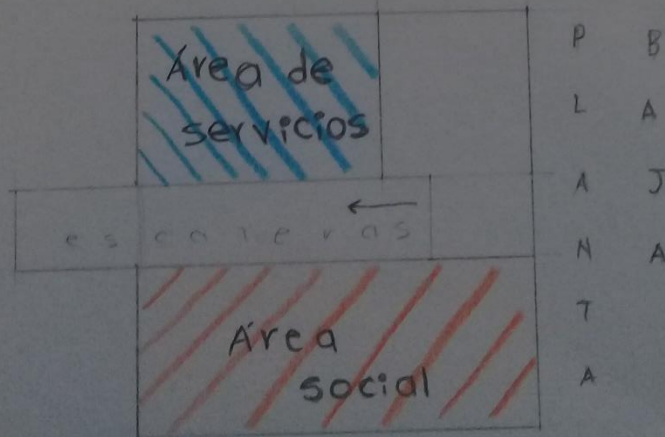
- Se conserva parte de la línea que forma el cuadrado y se agregó la "oreja" de la taza



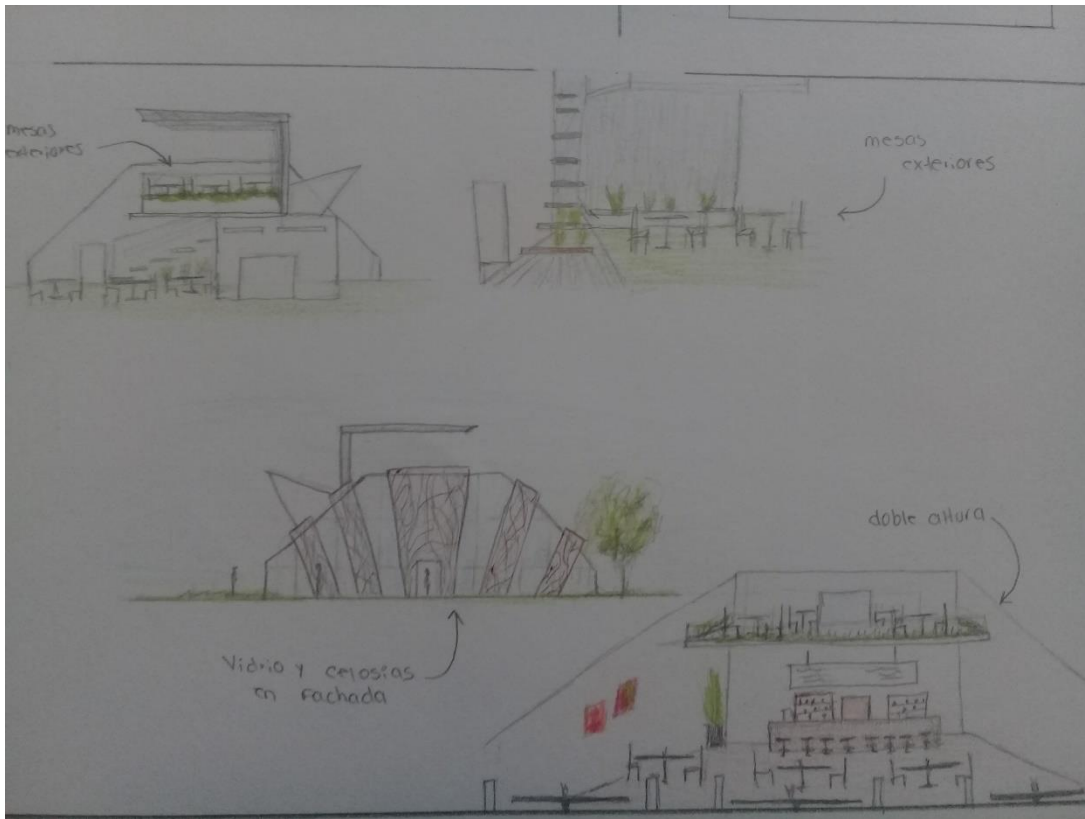
ores



Hora



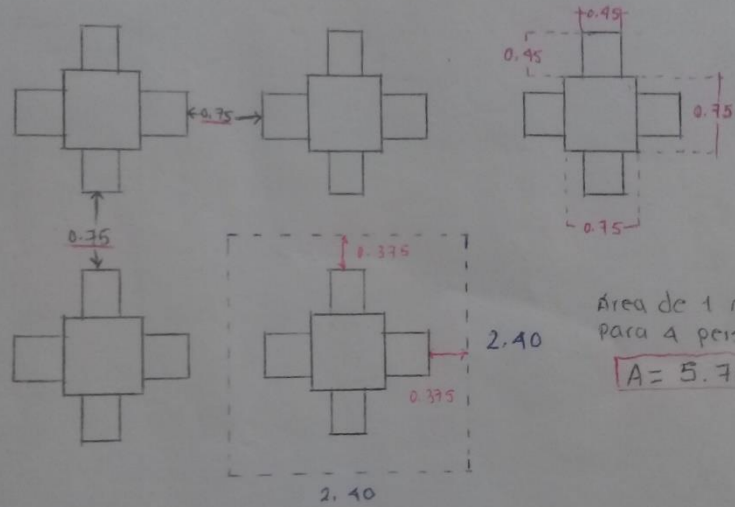




**Analysis de áreas**

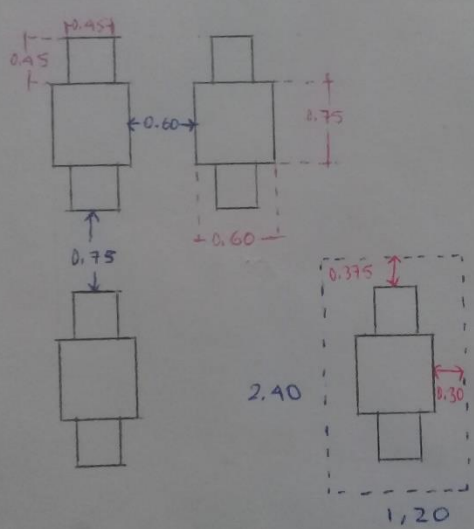
Mesa para 4 personas			Mesa para 2 personas			Barra		
<p>Area de 1 mesa para 4 personas <math>A = 5.76 \text{ m}^2</math></p>			<p>Area para 1 mesa de 2 personas <math>A = 2.88 \text{ m}^2</math></p>			<p>Area para 1 persona en 10 <math>A = 0.95 \text{ m}^2</math></p> <p>Area para 10 personas en 10 barra <math>A = 9.5 \text{ m}^2</math></p>		
Área de comensales exterior (40 personas)			Área de comensales exterior (20 personas)			Barra (10 personas)		
Cantidad	Tipo de mesa	Área	Cantidad	Tipo de mesa	Área	$A = 7.5 \text{ m}^2$		
10	Para 4 personas	57.60 m <sup>2</sup>	5	Para 4 personas	28.80 m <sup>2</sup>			
20	Para 2 personas	57.60 m <sup>2</sup>	10	Para 2 personas	28.80 m <sup>2</sup>			
5	Para 4 personas	28.80 m <sup>2</sup>	4	Para 4 personas	23.04 m <sup>2</sup>			
10	Para 2 personas	28.80 m <sup>2</sup>	2	Para 2 personas	5.76 m <sup>2</sup>			
		57.60 m <sup>2</sup>			28.80 m <sup>2</sup>			
$A = 57.60 \text{ m}^2$			$A = 28.80 \text{ m}^2$					

### Mesa para 4 personas



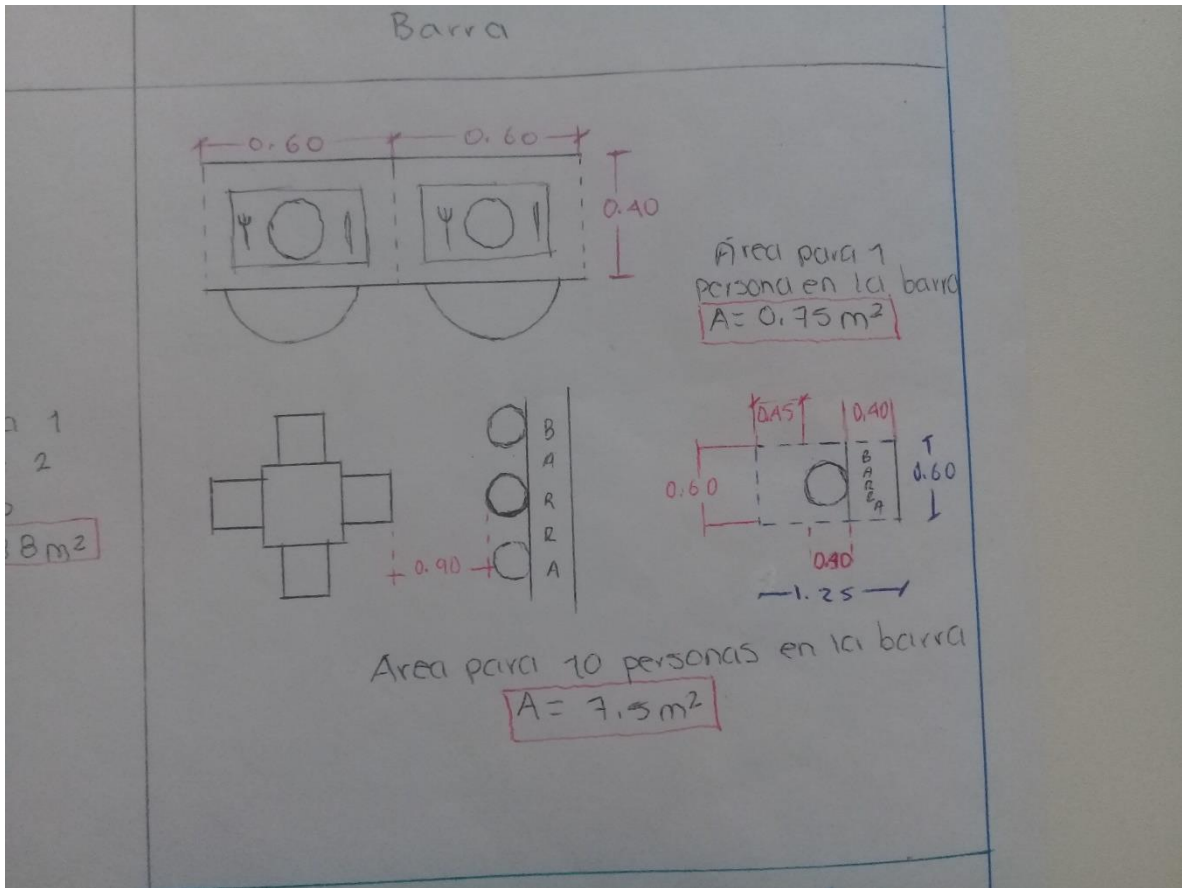
Área de 1 mesa para 4 personas  
 $A = 5.76m^2$

### Mesa para 2 personas



Área para 1 mesa de 2 personas  
 $A = 2.88m^2$

mesa  
 2 personas  
 $76m^2$



Área de comensales exterior (40 personas)			Área de comensales exterior (20 personas)		
Cantidad	Tipo de mesa	Área	Cantidad	Tipo de mesa	Área
10	Para 4 personas	57.60 m <sup>2</sup>	5	Para 4 personas	28.80 m <sup>2</sup>
20	Para 2 personas	57.60 m <sup>2</sup>	10	Para 2 personas	28.80 m <sup>2</sup>
5	Para 4 personas	28.80 m <sup>2</sup>	4	Para 4 personas	23.04 m <sup>2</sup>
10	Para 2 personas	28.80 m <sup>2</sup>	2	Para 2 personas	5.76 m <sup>2</sup>
		57.60 m <sup>2</sup>			28.80 m <sup>2</sup>
		$A = 57.60 \text{ m}^2$			$A = 28.80 \text{ m}^2$

