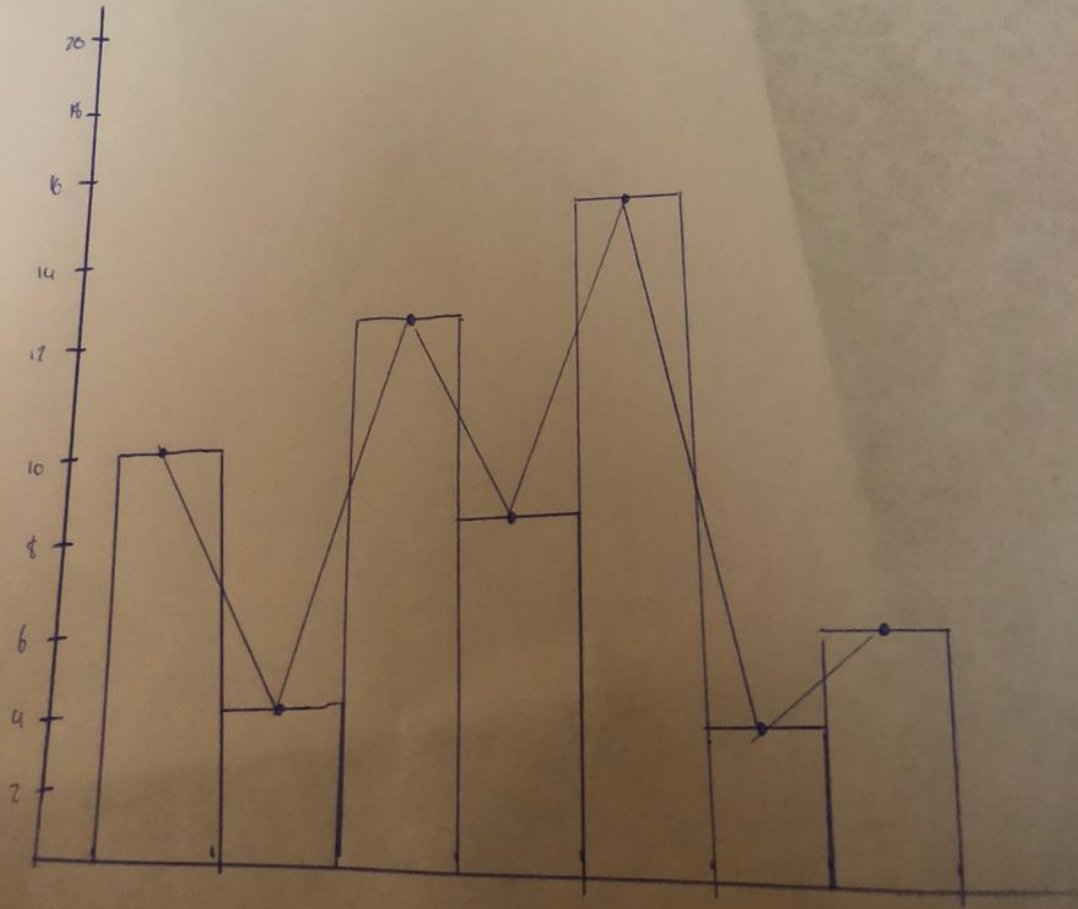


Datos	f_i	f_{i+1}	M_i	$f_i - M_i$	f_i	$f_i \%$
10-20	10	10	15	150	.1754	17.54 %
20-30	4	14	25	100	.0701	7.01 %
30-40	12	26	35	420	.2105	21.05 %
40-50	8	34	45	360	.01403	14.03 %
50-60	14	48	55	770	.2486	24.86 %
60-70	3	51	65	195	.0526	5.26 %
70-80	6	57	75	450	.1052	10.52 %
	<u>6</u>					
	$N=57$					



Dromedio

$$\bar{x} = \frac{\sum mc \cdot fa}{n} = \frac{150 + 100 + 420 + 280 + 770 + 145}{57}$$
$$= \frac{2.445}{57} = 42.8947$$

Moda

$$L_i + \left(\frac{f_i - f_{i-1}}{f_i - f_{i-1} + f_i - f_{i+1}} \right) \cdot a_i$$

$$L_0 = 30 + \left(\frac{3}{813} \right) \cdot 10 = 48.18$$

Mediana

$$L_i + \frac{\left(\frac{n}{2} - (f_{ac} - 1) \right) \cdot a_i}{a}$$

$$M = 40 + \left(\frac{28.5 - 26}{8} \right) \cdot 10 = 53.125$$