

Rodrigo Eduardo Jimenez Gomez

Periodo x	Demanda y	x ²	y ²	x, y
1	450	1	202,500	450
2	650	4	422,500	1,300
3	700	9	490,000	2,100
4	880	16	774,400	3,520
5	980	25	960,400	4,900
Σ	15	55	2,849,800	12,270

$$b = \frac{5 \times 12,270 - 15 \times 3660}{5 \times 55 - 225}$$

$$b = \frac{61,350 - 54,900}{275 - 225}$$

$$b = \frac{6,450}{50}$$

$$b = 129$$

$$a = \frac{3660 - 129 \times 15}{5}$$

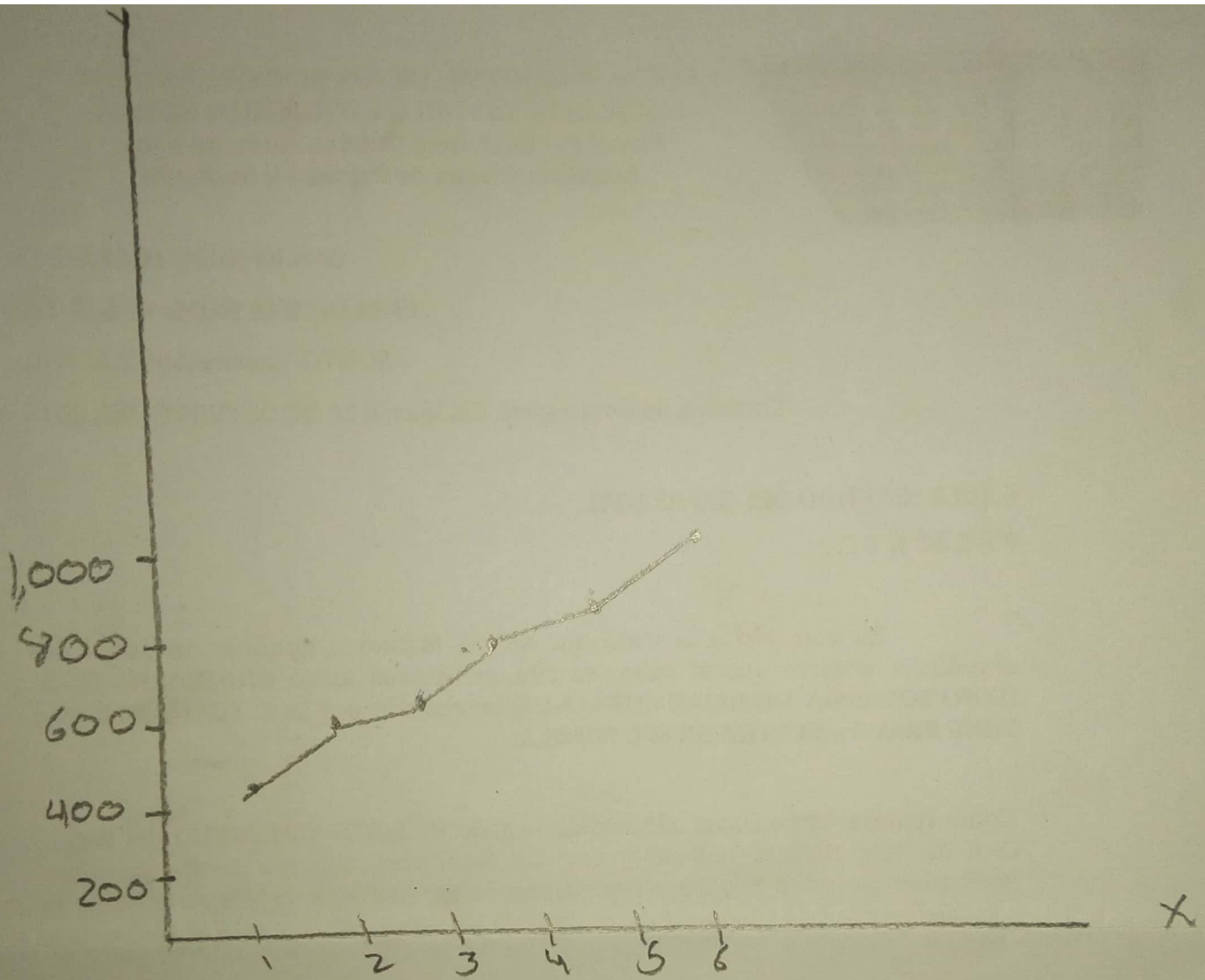
$$a = \frac{3660 - 1935}{5}$$

$$a = \frac{1725}{5}$$

$$a = 345$$

$$Y(6) = 345 + 129(6)$$

$$Y(6) = 1,119$$



Raúl Eduardo Jiménez Gómez