



UNIVERSIDAD DEL SURESTE

ESCUELA DE MEDICINA

4to Semestre

Grupo "B"

BIOLOGIA MOLECULAR

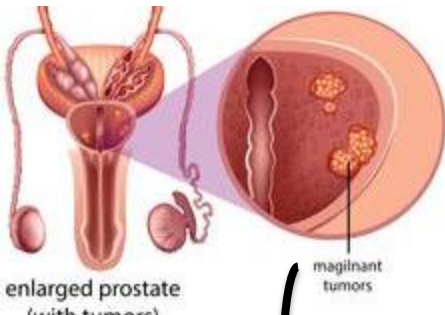
21/06/2020

QFB. HUGO NAJERA MIJANGOS

Presenta:

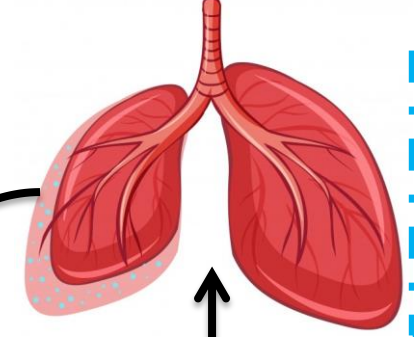
- ROMINA CORONADO ARGUELLO





BRCA1, BRCA2 y HOXB13

TP53 brazo corto del cromosoma 17. Metástasis

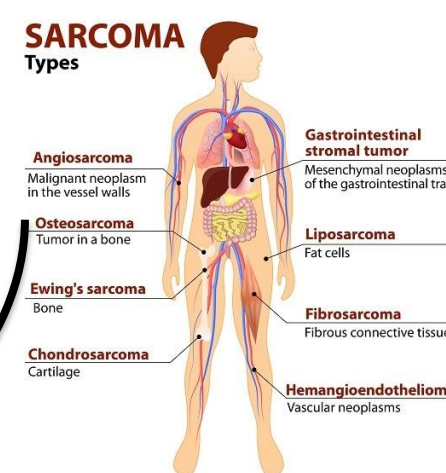


Cáncer de pulmón

FGFR3, HRAS, RBI, TP53, TSC1 y cromosoma 9. (aveces la orina se ve distinta)

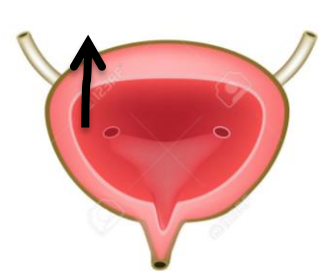


PTCH1



BCL-6, P53, BCL-2X Pueden manifestarse en cualquier lugar

Linfoma de Hoodkin



Cáncer de vejiga

Sarcoma



VHL

Cáncer de riñón

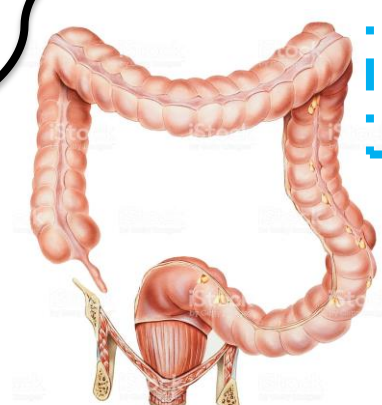
Cáncer de próstata

TIPOS DE CANCER Y GEN AFECTADO

Leucemia

BCR-ABL.

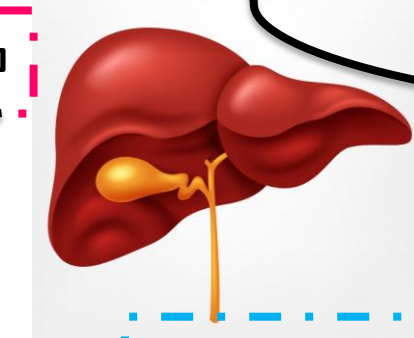
CDKN2A



APC, K-RAS Y DDC

Cáncer de colon y recto

Cáncer de hígado



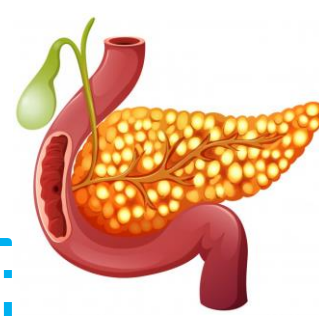
Melanoma



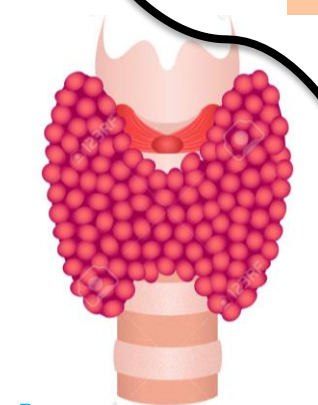
Cáncer de endometrio

PTEN, PI3KCA, KRAS, FGFR2, CTNNB1, MSI Y ARIDIA

Cáncer de páncreas

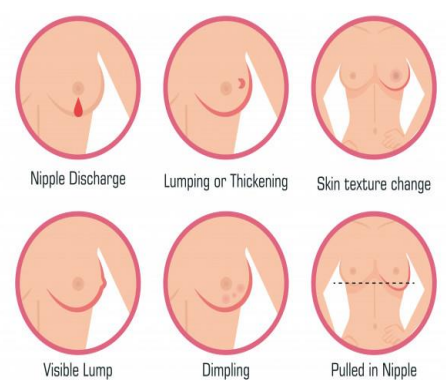
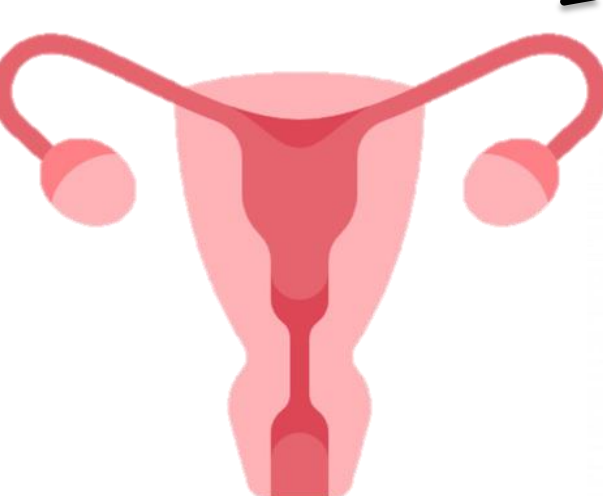


P53, B-catenina, EGFR, PIK3CA, PTEN, K-RAS, H-RAS, N-RAS



Cáncer tiroides

RET, BRAF, PTC, NTRK1, RAS, TP53,



Cáncer de mama

BRCA1 o BRCA2

BRCA1, BRCA2, PALB2, ATM, CDKN2A, PRSSI y SPINK1