



Universidad del Sureste

Escuela de Medicina



“Biología Molecular”

Presenta:

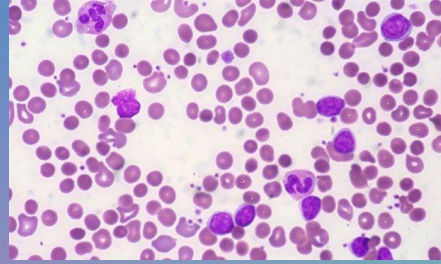
Carlos Omar Pineda Gutierrez

Catedrático:

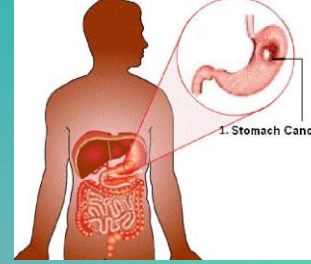
QFB. Hugo Nájera Mijangos

Comitán de Domínguez Chiapas a 21/06/2020

Tipos de cáncer



BCR/ABL y AML 1



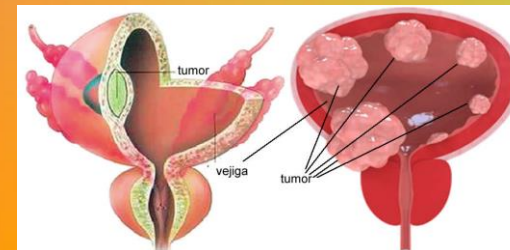
K-SAM, P53, P73,
bcl2, APC



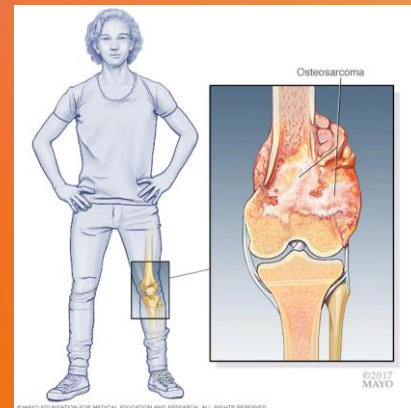
P53,STK11, LRP1 B,
BRAF



P53,PAG,GN, KRAS



FGFR3, HRAS, RB1,
TP53, TSC1



OST, RB



EGFR, p53



BRCA1, BRCA2,Rb, p53,
NF1