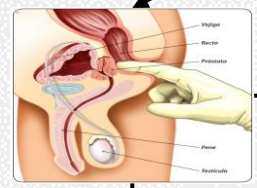
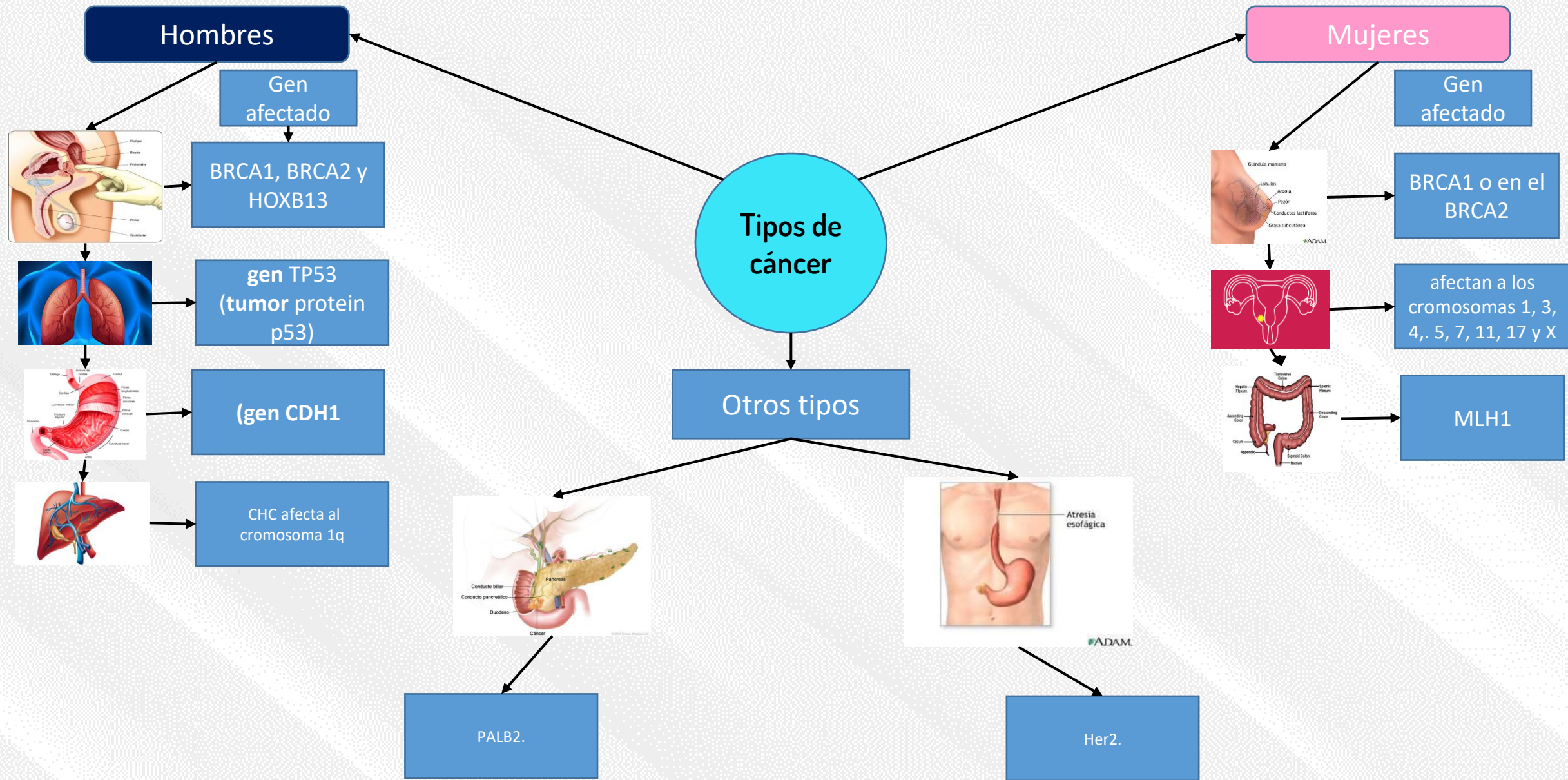


Tipos de cancer

Presenta: Raymundo López Santiago



BRCA1, BRCA2 y HOXB13



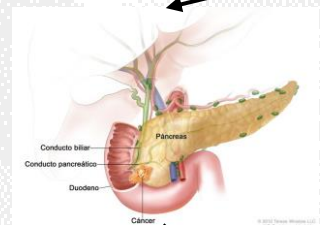
gen TP53 (tumor protein p53)



(gen CDH1)



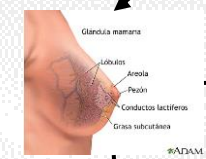
CHC afecta al cromosoma 1q



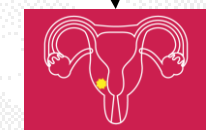
PALB2.



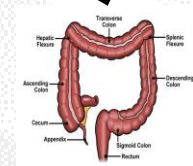
Her2.



BRCA1 o en el BRCA2



afectan a los cromosomas 1, 3, 4, 5, 7, 11, 17 y X



MLH1

Bibliografía

Urry, L. A., Cain, M. L., Wasserman, S. A., Minorsky, P. V., & Reece, J. B. (2017). *Campbell Biology* (11th ed.). Pearson.