

2 Wh-questions with be

- ▶ Use *what* to ask about things. Use *where* to ask about places. Use *Who* to ask about people. Use *What ... like?* to ask for a description.
- ▶ Use *how* to ask for a description: **How are** you today? Use *How old* to ask about age: **How old** is he?
- ▶ In answers about age, you can use only the number or the number + *years old*. He's **18**. OR He's **18 years old**.

Complete the questions with *how*, *what*, *where*, or *who*. Then match the question with the answers.

- | | |
|---|--|
| 1. <u>Who</u> is that? <u>d</u> | a. We're from Thailand – from Bangkok. |
| 2. <u>What</u> is her name? <u>c</u> | b. She's 16. |
| 3. <u>How</u> is she like? <u>f</u> | c. Her name is Nittaya. |
| 4. <u>How</u> old is she? <u>b</u> | d. She's my sister. |
| 5. <u>Where</u> is your family from? <u>a</u> | e. It's really beautiful. |
| 6. <u>What</u> is Bangkok like? <u>e</u> | f. She's a little shy. |

WORD POWER Descriptions

A Listen and practice.



- | | | | | |
|-----------------|--------------|------------|-------------|---------|
| a. pretty | d. talkative | g. serious | j. tall | m. thin |
| b. handsome | e. quiet | h. shy | k. friendly | |
| c. good-looking | f. funny | i. short | l. heavy | |

UNIT II. WHERE ARE YOU FROM?

2.1.- Cities and Countries

1 SNAPSHOT

⊙ Listen and practice.

The Ten Largest Cities in the World



(based on population in the metropolitan area)

Cities	Countries
1. Tokyo	a. Brazil
2. Seoul	b. China
3. Mexico City	c. India
4. New York City	d. Indonesia
5. Mumbai	e. Japan
6. Jakarta	f. Mexico
7. São Paulo	g. South Korea
8. Delhi	h. the U.S.
9. Osaka	
10. Shanghai	

Source: www.worldfact.com

Match the cities with the countries. Then check your answers at the bottom of the Snapshot. What other large cities are in each country? What large cities are in your country?

2 CONVERSATION Are you from Seoul?

A ⊙ Listen and practice.

Tim: Are you from California, Jessica?
 Jessica: Well, my family is in California now, but we're from South Korea originally.
 Tim: Oh, my mother is Korean – from Seoul! Are you from Seoul?
 Jessica: No, we're not. We're from Daejeon.
 Tim: So is your first language Korean?
 Jessica: Yes, it is.

WELCOME NEW STUDENTS



B ⊙ Listen to Jessica and Tim talk to Tony, Natasha, and Monique. Check (✓) True or False.

	True	False
1. Tony is from Italy	<input type="checkbox"/>	<input type="checkbox"/>
2. Natasha is from New York.	<input type="checkbox"/>	<input type="checkbox"/>
3. Monique's first language is English.	<input type="checkbox"/>	<input type="checkbox"/>

.2.- Negative and Questions with be

Negative statements and yes/no questions with be

I'm **not** from New York.
 You're **not** late.
 She's **not** from Russia.
 He's **not** from Italy.
 It's **not** English.
 We're **not** from Japan.
 You're **not** early.
 They're **not** in Mexico.

Are **you** from California?
 Am **I** early?
 Is **she** from Brazil?
 Is **he** from Chile?
 Is **it** Korean?
 Are **you** from China?
 Are **we** late?
 Are **they** in Canada?

I am .	I'm	not .
you are .	you're	not .
she is .	she's	not .
Yes, he is .	No, he's	not .
it is .	it's	not .
we are .	we're	not .
you are .	you're	not .
they are .	they're	not .

We're = We are

A Complete the conversations. Then practice with a partner.

- A: Hiroshi, are you and Maiko from Japan?
 B: Yes, we are.
 A: Oh? are you from Tokyo?
 B: No, I'm not. I am from Kyoto.
- A: Is it Laura from the U.S.?
 B: No, she's not. She's from the U.K.
 A: is she from London?
 B: Yes, she is. But her parents are from Italy. They've not from the U.K. originally.
 A: is Laura's first language Italian?
 B: No, it's not. is English.
- A: are Selina and Carlos from Mexico?
 B: No, They're not. They are from Brazil.
 A: are you from Brazil, too?
 B: No, I am not. I'm from Peru.
 A: So, is your first language Spanish?
 B: Yes, it is.



B Match the questions with the answers. Then practice with a partner.

- | | |
|--|---|
| 1. Are you and your family from Canada? <u>d</u> | a. No, he's not. He's from Singapore. |
| 2. Is your first language English? <u>c</u> | b. Yes, she is. She's from California. |
| 3. Are you Japanese? <u>e</u> | c. No, it's not. It's Japanese. |
| 4. Is Mr. Ho from Hong Kong? <u>a</u> | d. No, we're not. We're from Australia. |
| 5. Is your mother from the U.S.? <u>b</u> | e. Yes, we are. We're from Kyoto. |

C PAIR WORK Write five questions like the ones in part B. Then ask and answer your questions with a partner.

1 Negative statements and yes/no questions with be

- ▶ Use *be* + *not* to form negative statements: Ana **isn't** a student. (NOT: ~~Ana is n~~
~~a student.~~)
- ▶ *You* is a singular and a plural pronoun: Are **you** from Rio? Yes, **I am**. / Yes, **we**

A Unscramble the words to write negative statements.


1. in California / not / New York City / is
New York City is not in California.
2. London / not / from / we're
not we're from London
3. not / you and Tim / in my class / are
you and Tim are not in my class
4. is / my first language / Spanish / not
Spanish is not my first language
5. from / my mother / not / is / Seoul
my mother is not from Seoul
6. my keys / not / are / they
they are not my keys

B Complete the conversations.


1. A: Are you and your family from Mexico?
B: No, we've not. we are from Guatemala.
2. A: is your first language English?
B: Yes, it is. My parents are from Australia.
3. A: it is Kenji and his friend Japanese?
B: Yes, they are. But they are in the U.S. now.
4. A: are we my mother and I late?
B: No, you've not. it is early!





2.3.- Numbers and Ages

NUMBERS AND AGES

A  Listen and practice.

11 eleven	21 twenty-one	40 forty
12 twelve	22 twenty-two	50 fifty
13 thirteen	23 twenty-three	60 sixty
14 fourteen	24 twenty-four	70 seventy
15 fifteen	25 twenty-five	80 eighty
16 sixteen	26 twenty-six	90 ninety
17 seventeen	27 twenty-seven	100 one hundred
18 eighteen	28 twenty-eight	101 one hundred (and) one
19 nineteen	29 twenty-nine	102 one hundred (and) two
20 twenty	30 thirty	103 one hundred (and) three

B  Listen and practice. Notice the word stress.

 thirteen - thirty
  fourteen - forty
  fifteen - fifty
  sixteen - sixty

C PAIR WORK Look at the people in Jill's family for one minute. Then close your books. How old are they? Tell your partner.



A. Helen - 76



B. Howard - 52



C. Jackie - 49



D. Megan - 23



E. Tim and Tom

2.4.- Wh-questions with be

Wh-questions with be

What's your name?

My name is Jill.

Where are you from?

I'm from Canada.

How are you today?

I'm just fine.

Who's that?

He's my brother.

How old is he?

He's twenty-one.

What's he like?

He's very nice.

Who's = Who is

Who are they?

They're my classmates.

Where are they from?

They're from Rio.

What's Rio like?

It's very beautiful.

A Complete the conversations with Wh-questions. Then practice with a partner.

- A: Look! Who's that ?

B: Oh, he's a new student.

A: What's his name ?

B: I think his name is Ming.

A: Ming? where is he from ?

B: He's from China.
- A: Serhat, where are you ?

B: I'm from Turkey - from Istanbul.

A: how is there ?

B: Istanbul is very old and beautiful.

A: what's your last name ?

B: My last name is Erdogan.
- A: Hi, John. how are you ?

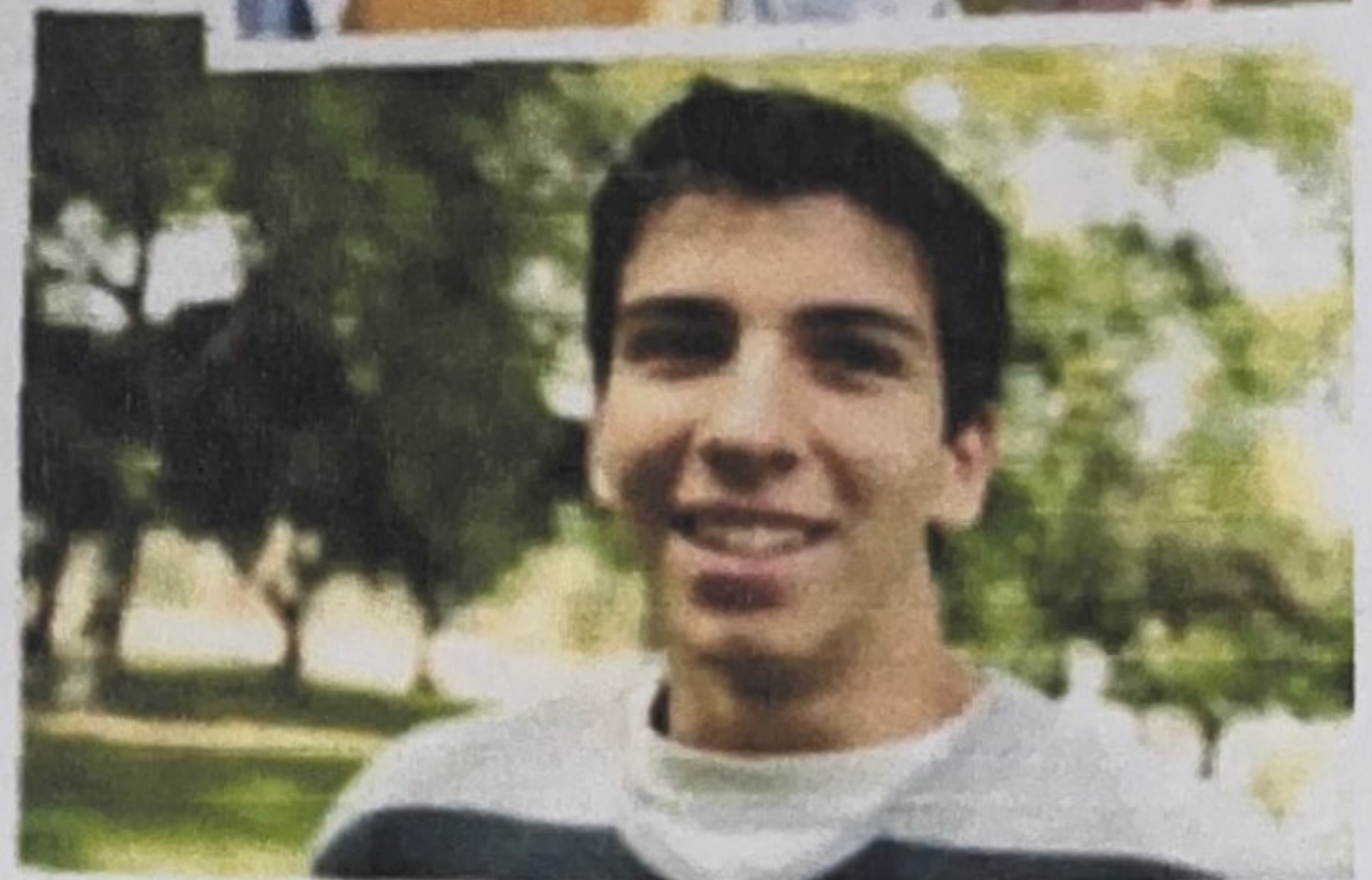
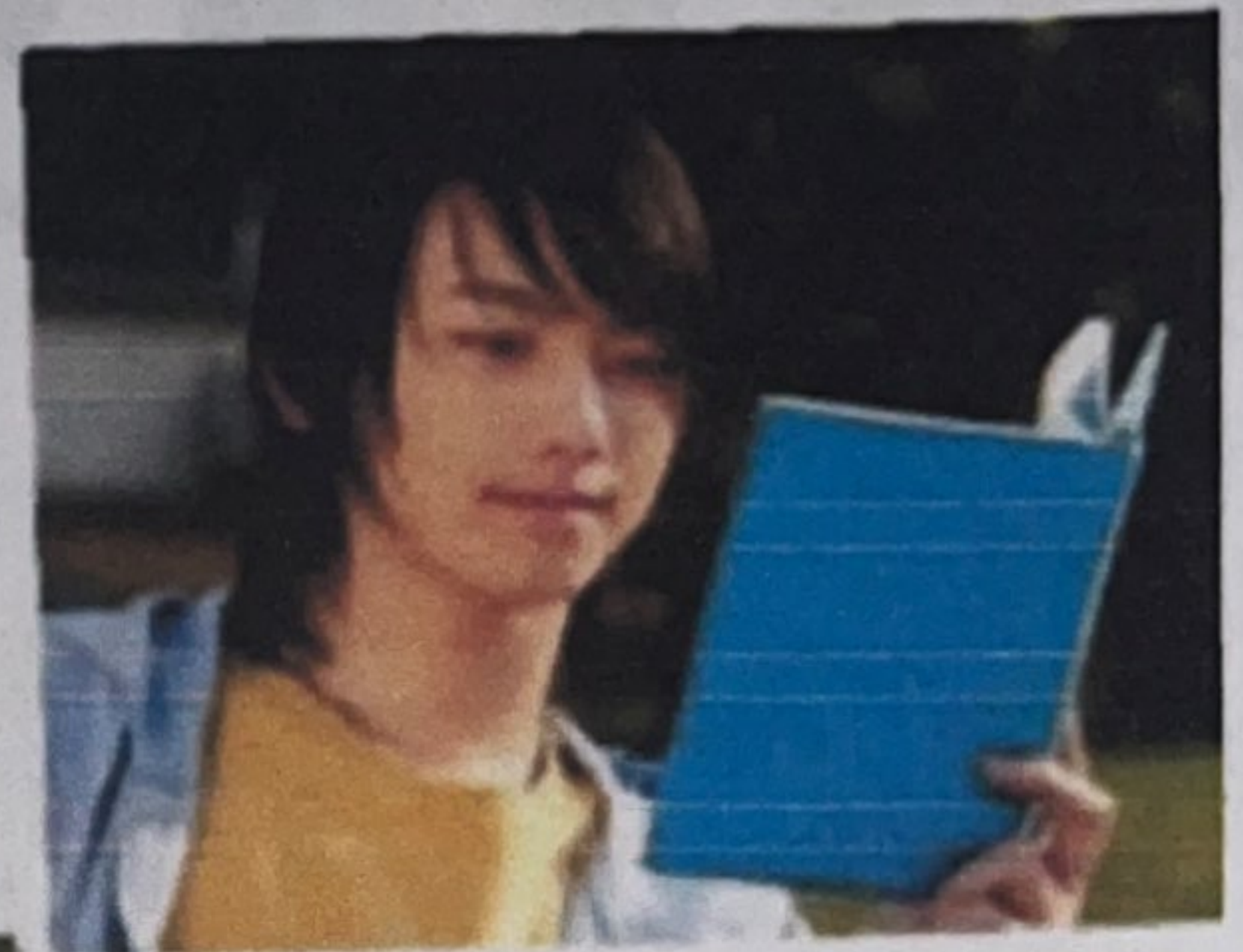
B: I'm just fine. My friend Teresa is here this week - from Argentina.

A: Oh, cool. how is Teresa ?

B: She's really friendly.

A: how old is she ?

B: She's twenty-eight years old.



2.2.- Where are they from?

WHERE ARE THEY FROM?

A Where are these people from? Check (✓) your guesses.



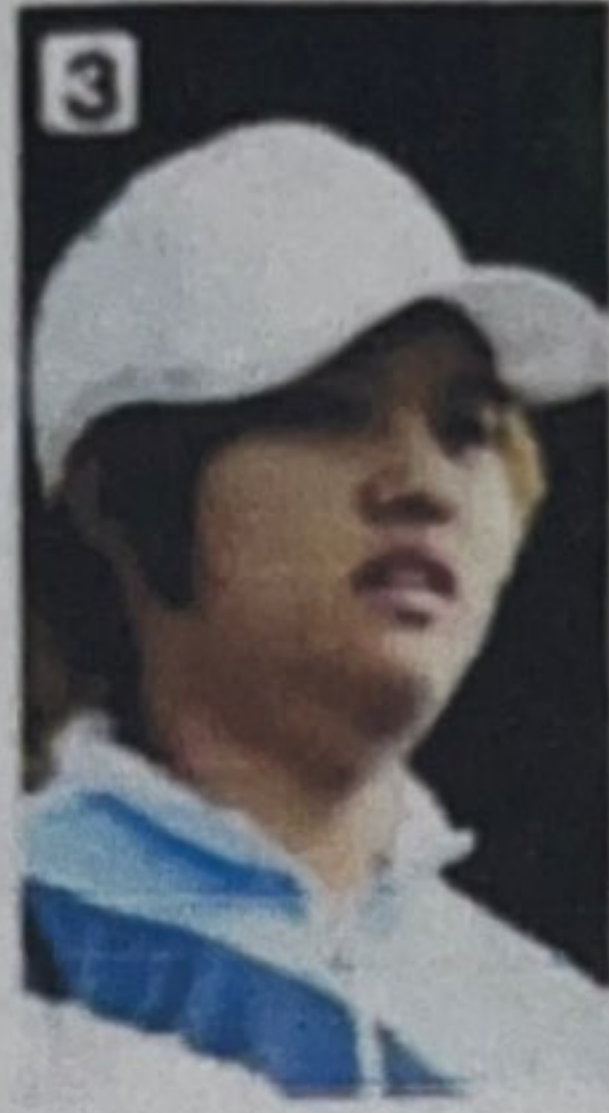
1 Penelope Cruz

- Mexico
- France
- Spain



2 Robert Pattinson

- the U.S.
- the U.K.
- Canada



3 Haru Nomura

- South Korea
- Japan
- China



4 Cate Blanchett

- Australia
- New Zealand
- South Africa



5 Javier Hernández

- Brazil
- Mexico
- Chile

B PAIR WORK Compare your guesses. Then check your answers at the bottom of the page.

A: Is Penelope Cruz from Mexico?
 B: No, she's not.
 A: Is she from France?
 B: Yes, she is.

A: Is Robert Pattinson from U.K?
 B: Yes, he is.
 A: Is Cate Blanchett from Australia?
 B: Yes, she is.

A: Is Haru Nomura from China?
 B: No, he's not.
 A: Where is he from?
 B: He is from Japan.
 A: Is Javier Hernandez from Chile?
 B: No, he's not.
 A: Is he from Mexico?
 B: Yes, he is.

CONVERSATION He's cute.

1 Listen and practice.

Emma: Who's that?
 Jill: He's my brother.
 Emma: Wow! He's cute. What's his name?
 Jill: James. We call him Jim.
 Emma: Oh, how old is he?
 Jill: He's twenty-one years old.
 Emma: What's he like? Is he nice?
 Jill: Yes, he is - and he's very smart, too!
 Emma: And who's that?
 Jill: My sister Tammy. She's only twelve. She's the baby of the family.

