



PLACE 1



PLACE 2



School



Library



Bookstore



Post Office



Pharmacy



Hospital



Police Station



Bank



Bus Stop



Airport



Train Station



Petrol Station



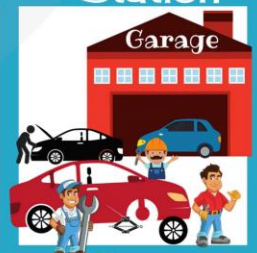
Hotel



Church



Factory



Garage



Market



Supermarket



Bakery



Cafe



Restaurant



Clothing Store



Shoe Shop



Theater



Cinema



PLACE 3



Amusement Park



Sports Centre



Playground



Bridge



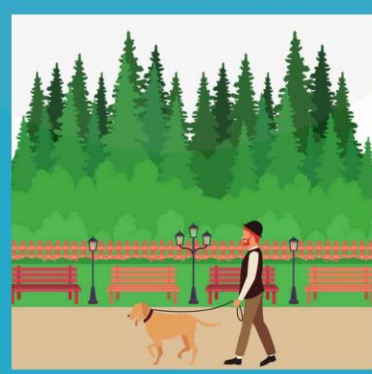
Museum



Swimming Pool



Farm



Park



Zoo

IN THE CITY



City Centre
(UK)/ City
Center (US)



Car Park (UK)/
Parking Lot
(US)



Telephone Box
(UK)/ Telephone
Booth (US)



Pavement
(UK)/ Sidewalk
(US)



Cycle Path
(UK)/ Bicycle
Path (US)



Traffic
Jam



Street
Lights



Crossroads



Flyover (UK)/
Overpass (US)



Underpass



Roundabout



Pedestrian
Crossing (UK)/
Crosswalk (US)



Road Sign



Traffic Lights



1. school
2. museum
3. bank
4. airport
5. post office
6. zoo
7. restaurant
8. train station
9. supermarket
10. hospital
11. bus stop
12. park
13. fire station
14. police station





TRANSPORTATION



Van



Taxi



Police car



Bus



Ambulance



Baby carriage(US)
/Pram (UK)



Bicycle



Mountain bike



Scooter



Motorcycle

Skateboard



Fire engine



Crane



Forklift



Tractor



Recycling truck



Cement mixer



Dump truck



Subway



Aerial tramway



Helicopter



Airplane



Balloon



Tram(U.K)
/ Streetcar (U.S)



Carriage



Rowboat



Boat



Train

What are the imperatives?

To give out orders

Tidy your room!

To give someone instructions

Take the first turning on the left

To give informal advice

Stay a little longer, its the weekend after all!

To offer something

Have some cake, it's delicious.

● **How do I form an imperative sentence?**

Verb (Infinitive) +

Object or Complement

Open your books

● **How do I form negative imperatives?**

Do + Not (Don't) +

Verb (Infinitive)

+ Object or Complement

Don't be afraid!

GIVING DIRECTIONS



turn left



turn right



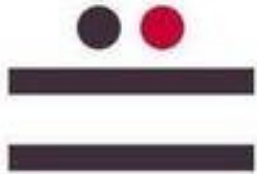
go past...



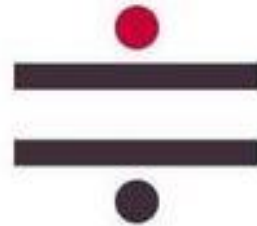
cross



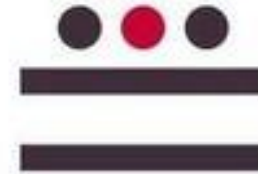
at the corner
of...



next to



opposite



between