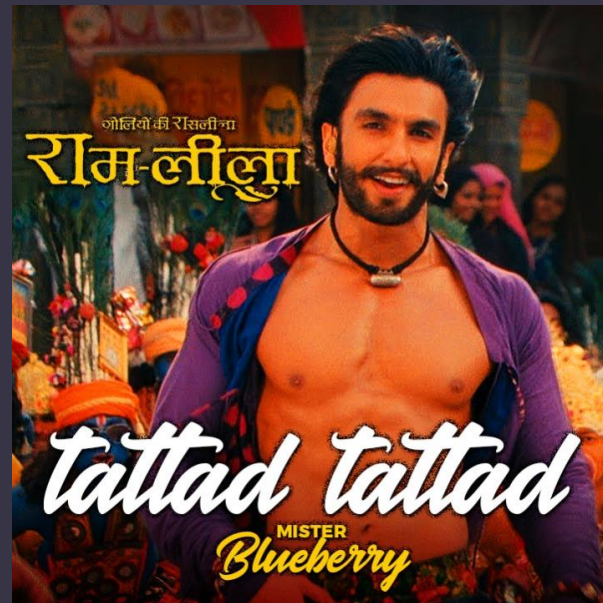




ENTERTAINMENTS

- SHOWS, MOVIES, TELEVISION, OR OTHER PERFORMANCES OR ACTIVITIES THAT ENTERTAIN PEOPLE, OR A PERFORMANCE OF THIS TYPE:
- *There's not much in the way of entertainment in this town - just a movie theater and a couple of bars.*
- This season's entertainments include five new plays and several concerts of Chinese and Indian music.



EROSNOW Watch FREE movies on ErosNow.com

EROSNOW





- This film is good family entertainment .
- I thought there was some in-flight entertainment on the Heathrow-New York flight.

- They lay on free entertainment at the club every day.
- What did you do for entertainment while you were staying there - just watch TV?
- Stars of the entertainment world turned out to celebrate his 40th year in show business.





SIMPLE PRESENT

GRAMMAR

- THE PRESENT TENSE IS THE **BASE FORM** OF THE VERB:
 - I WORK IN LONDON.
- BUT WITH THE THIRD PERSON SINGULAR (**HE/SHE/IT**), WE ADD AN **-S**
 - SHE WORKS IN LONDON.

WE USE THE PRESENT SIMPLE TO TALK ABOUT

- SOMETHING THAT IS TRUE IN THE PRESENT:

I'm nineteen years old.

I'm a student.

He lives in London.

- SOMETHING THAT HAPPENS REGULARLY IN THE PRESENT:

I play football every weekend

- SOMETHING THAT IS ALWAYS TRUE:

The human body contains 206 bones.

Light travels at almost 300,000 kilometres per second.

- WE OFTEN USE ADVERBS OF FREQUENCY LIKE SOMETIMES, ALWAYS AND NEVER WITH THE PRESENT SIMPLE:

I sometimes go to the cinema.

She never plays football.

PRESENT SIMPLE QUESTIONS

- Do you play the piano?
 - Where do you live?
- Does Jack play football?
- Where does he come from?
- Do Rita and Angela live in Manchester?
 - Where do they work?

QUESTIONS

- WE USE DO AND DOES TO MAKE QUESTIONS WITH THE PRESENT SIMPLE. WE USE **DOES** FOR THE THIRD PERSON SINGULAR (**SHE/HE/IT**) AND **DO** FOR THE OTHERS.
- We use do and does with question words like where, what and when:
 - Where **do** Angela and Rita live?
 - What **does** Angela do?
 - When **does** Rita usually get up?

BE CAREFUL!

- BUT QUESTIONS WITH WHO OFTEN DON'T USE DO OR DOES:
 - Who lives in London?
 - Who plays football at the weekend?
 - Who works at Liverpool City Hospital?

NEGATIVES

- I like tennis but I **don't** like football. (**don't = do not**)
 - I **don't** live in London now.
 - I **don't** play the piano but I play the guitar.
 - They **don't** work at the weekend.
- John **doesn't** live in Manchester. (**doesn't = does not**)
 - Angela **doesn't** drive to work. She goes by bus.

PRESENT SIMPLE AND FUTURE TIME

- WE ALSO USE THE PRESENT SIMPLE TO TALK ABOUT:
 - something that is fixed in the future:
 - The school term starts next week.
 - The train leaves at 19.45 this evening.
 - We fly to Paris next week.

ACTIVITIES

ACTIVITY 1. Choose the correct answer.

ACTIVITY 2. Listen to the song “cheerleader” by OMI and underline the use of present simple.